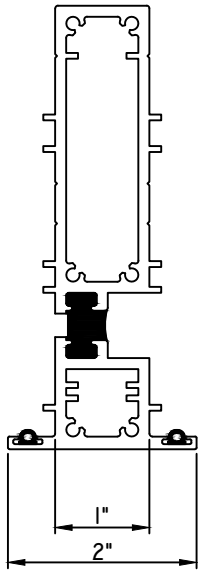


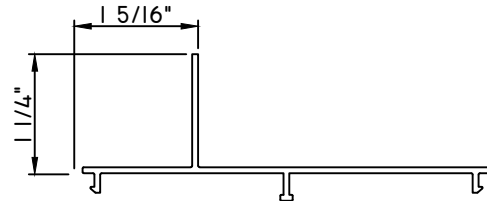


SWING DOOR ACCESSORIES



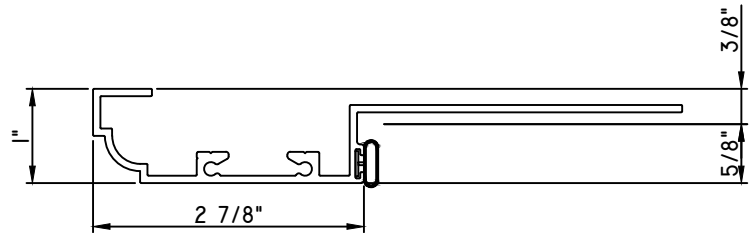
TRANSITION MULL

- M57588 - T-MULL
- PN-2930 - W.S. (QTY. 4)
- MH1/4 20X3/4 - BOLTS (18" APROX. O.C.)
- MW4220 X 3/4 - L-ANGLE (QTY. 2)
- MPS-8X1 1/2 - FASTENERS (QTY. 4)



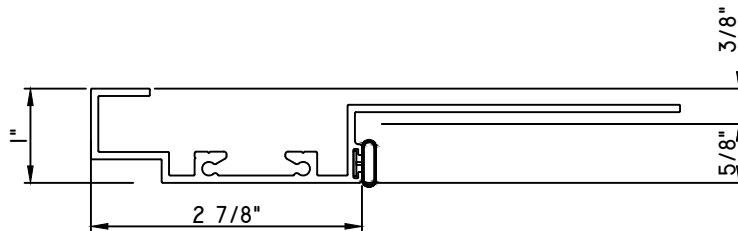
POSITIONING FIN

BRS-7863



PRESET PANNING

- M17937 - PANNING
- BPN-9159 - W.S.
- MH8-18X1 LP - FASTENER (QTY. 8)

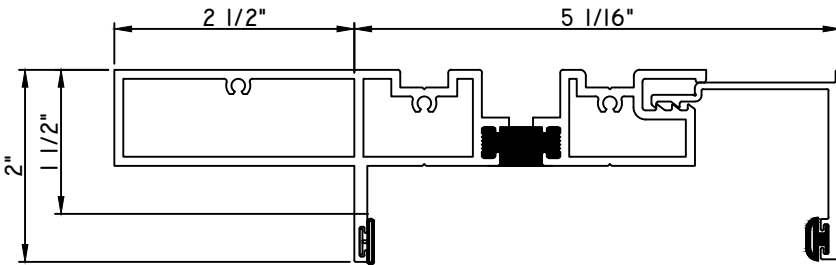


PRESET PANNING

- M17938 - PANNING
- BPN-9159 - W.S.
- MH8-18X1 LP - FASTENER (QTY. 8)



SWING DOOR ACCESSORIES



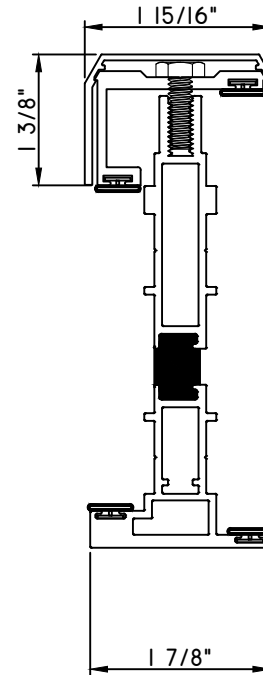
RECEPTOR & CLIP

- M24785 - RECEPTOR
- M24787 - CLIP
- BPN-9159 - RECEPTOR W.S.
- BPN-4189 - CLIP W.S.
- MH8-18X1 LP - FASTENER (QTY. 6)

MUST BE USED WITH SUBSILL:

M24786 SUBSILL

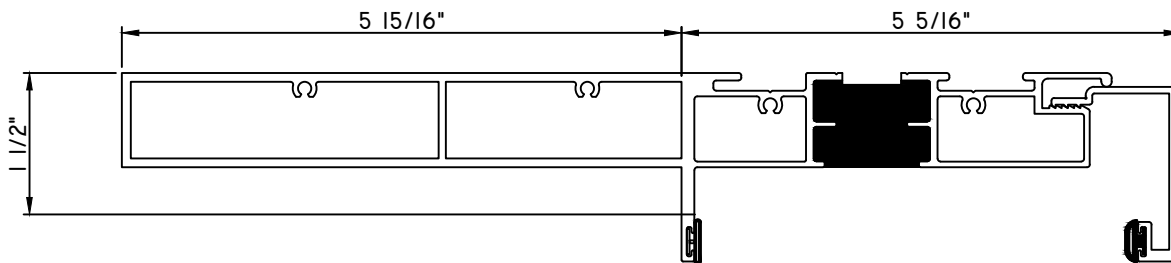
INSTALL TYPE:
PREASSEMBLED



T-MULL

- M24482 - T-MULL (New Die)
- M24480 - BASE (New Die)
- M24481 - CAP (New Die)
- BPN-9159 - W.S. (QTY. 4)
- MH1/4 20X3/4 - BOLTS (18" APROX. O.C.)
- 5228 - ANCHOR (QTY. 2)
- MPS-8X1 1/2 - FASTENERS (QTY. 2)

CAN ONLY BE USED WITH TD-H450 MULLED UNITS

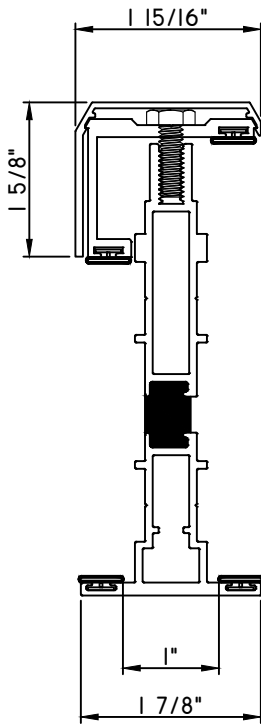


RECEPTOR TERRACE DOOR

- M24261-RECEPTOR
- 24277 - CLIP
- BPN-4189- W.S.



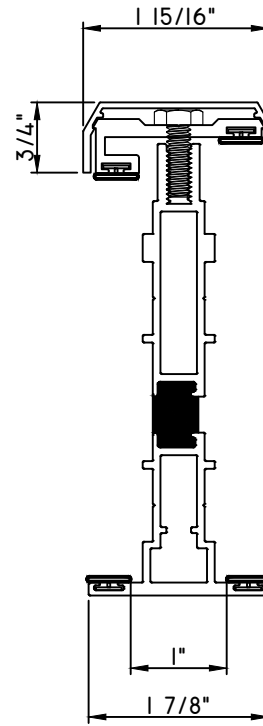
SWING DOOR ACCESSORIES



T-MULL

- M24487 - T-MULL (New Die)
- M24483 - BASE (New Die)
- M24484 - CAP (New Die)
- BPN-9159 - W.S. (QTY. 4)
- MH1/4 20X3/4 - BOLTS (18" APROX. O.C.)
- 5228 - ANCHOR (QTY. 2)
- MPS-8X1 1/2 - FASTENERS (QTY. 2)

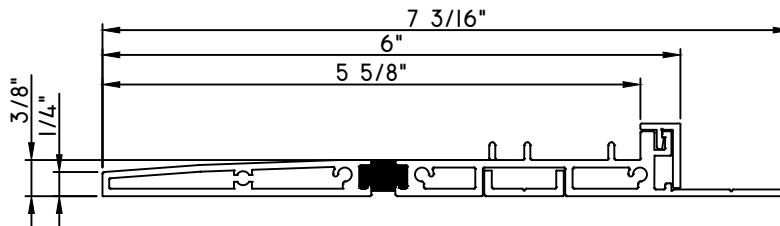
CAN ONLY BE USED WITH TD-M600 MULLED UNITS



T-MULL

- M24487 - T-MULL (New Die)
- M24485 - BASE (New Die)
- M24486 - CAP (New Die)
- BPN-9159 - W.S. (QTY. 4)
- MH1/4 20X3/4 - BOLTS (18" APROX. O.C.)
- 5228 - ANCHOR (QTY. 2)
- MPS-8X1 1/2 - FASTENERS (QTY. 2)

CAN ONLY BE USED WITH TD-C600 MULLED UNITS



LOW PROFILE SILL FLASHING

- M24494 - SILL FLASHING (New Die)
- M24488 - U CHANNEL (New Die)
- M24492 - TD FLASHING FILLER (New Die)

FIELD APPLIED INSTALL ONLY

DATE CREATED: 3/28/22

SCALE 1:2

SD