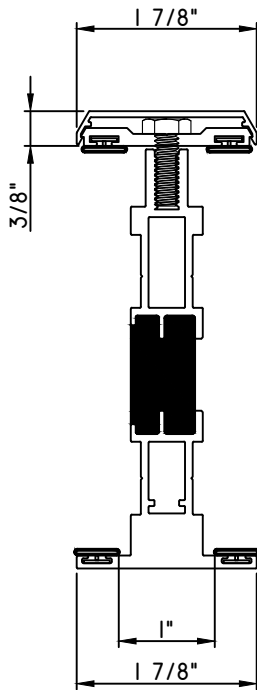




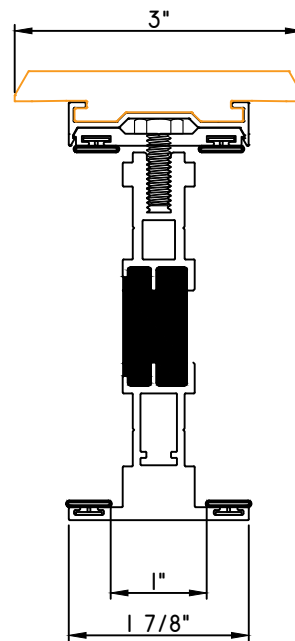
C600/W600 ACCESSORIES



T-MULL

- M23059 - T-MULL
- M23056 - BASE
- M23058 - CAP
- BPN-9159 - W.S. (QTY. 4)
- MH1/4 20X3/4 - BOLTS (18" APPROX. O.C.)
- 5228 - ANCHOR (QTY. 2)
- MPS-8X1 1/2 - FASTENERS (QTY. 2)

CAN ONLY BE USED WITH C600



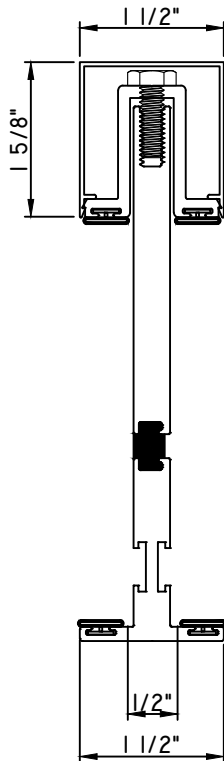
T-MULL

- M23060 - T-MULL
- M23056 - BASE
- M23057 - CAP
- 109474 - WOOD CAP
- BPN-9159 - W.S. (QTY. 4)
- MH1/4 20X3/4 - BOLTS (18" APPROX. O.C.)
- 5228 - ANCHOR (QTY. 2)
- MPS-8X1 1/2 - FASTENERS (QTY. 2)

CAN ONLY BE USED WITH W600



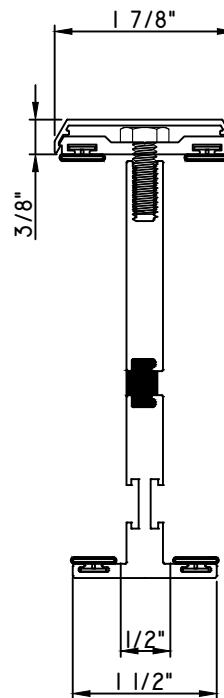
C600/W600 ACCESSORIES



T-MULL

- M24497 - T-MULL (New Die)
- M24495 - BASE (New Die)
- M24496 - CAP (New Die)
- BPN-9159 - W.S. (QTY. 4)
- MH1/4 20X3/4 - BOLTS (18" APROX. O.C.)
- TBD - ANCHOR (QTY. 2) (NEW ANCHOR)
- MPS-8X1 1/2 - FASTENERS (QTY. 2)

CAN ONLY BE USED WITH C600



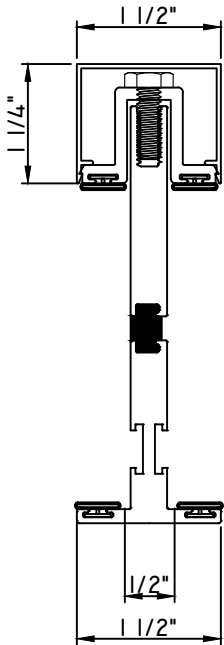
T-MULL

- M24500 - T-MULL (New Die)
- M23056 - BASE
- M23058 - CAP
- BPN-9159 - W.S. (QTY. 4)
- MH1/4 20X3/4 - BOLTS (18" APROX. O.C.)
- TBD - ANCHOR (QTY. 2) (New Die)
- MPS-8X1 1/2 - FASTENERS (QTY. 2)

CAN ONLY BE USED WITH C600



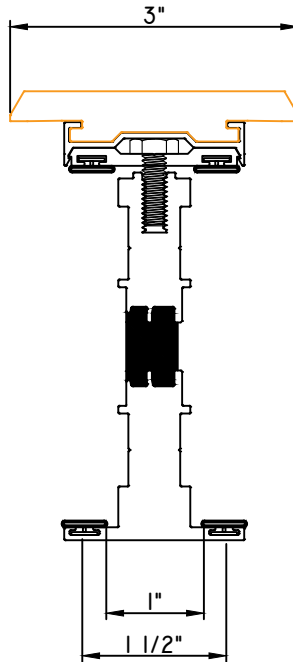
C600/W600 ACCESSORIES



T-MULL

- M24500 - T-MULL (New Die)
- M234498 - BASE (New Die)
- M24499 - CAP (New Die)
- BPN-9159 - W.S. (QTY. 4)
- MH1/4 20X3/4 - BOLTS (18" APROX. O.C.)
- TBD - ANCHOR (QTY. 2) (New Die)
- MPS-8X1 1/2 - FASTENERS (QTY. 2)

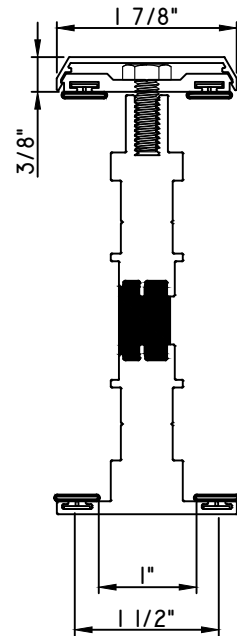
CAN ONLY BE USED WITH M600



T-MULL

- M24501 - T-MULL
- M23056 - BASE
- M23057 - CAP
- 109474 - WOOD CAP
- BPN-9159 - W.S. (QTY. 4)
- MH1/4 20X3/4 - BOLTS (18" APROX. O.C.)
- 5228 - ANCHOR (QTY. 2)
- MPS-8X1 1/2 - FASTENERS (QTY. 2)

CAN ONLY BE USED WITH W600



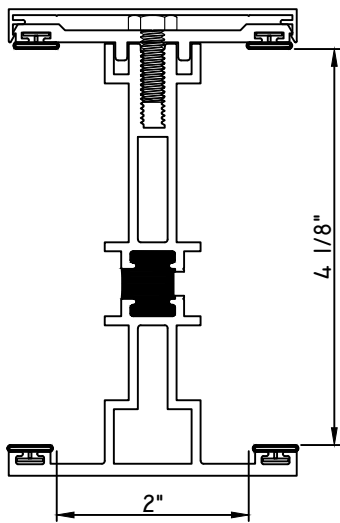
T-MULL

- M24502 - T-MULL
- M23056 - BASE
- M23057 - CAP
- 109474 - WOOD CAP
- BPN-9159 - W.S. (QTY. 4)
- MH1/4 20X3/4 - BOLTS (18" APROX. O.C.)
- 5228 - ANCHOR (QTY. 2)
- MPS-8X1 1/2 - FASTENERS (QTY. 2)

CAN ONLY BE USED WITH W600

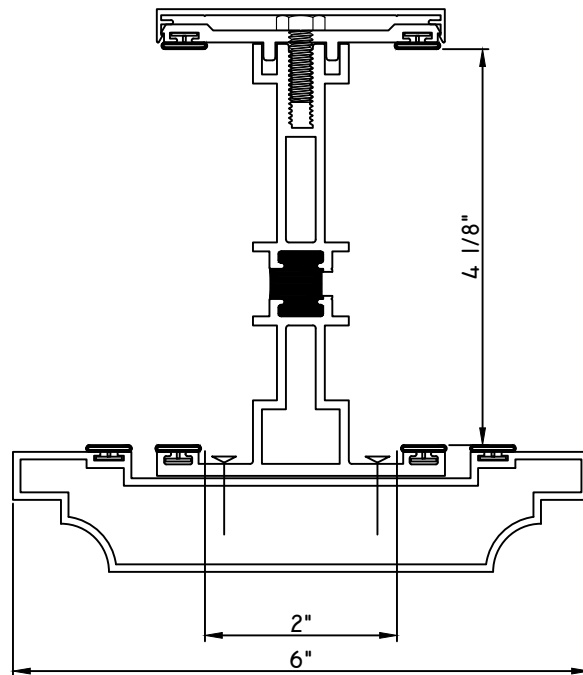


C600/W600 ACCESSORIES



HEAVY WALL T-MULL

- M24895 - T-MULL
 - M21043 - BASE
 - M21044 - CAP
 - BPN-9159 - W.S. (QTY. 4)
 - MH1/4 20X3/4 - BOLTS (18" APROX. O.C.)
 - M13404 - L-ANGLE (QTY. 2)
 - MPS-8X1 1/2 - FASTENERS (QTY. 4)
- M24895 I VALUE = 4.0072

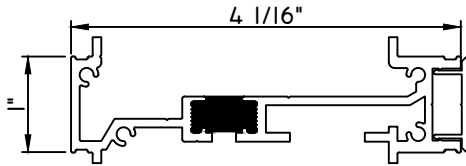


HEAVY WALL T-MULL

- M24895 - T-MULL
- M21043 - BASE
- M21044 - CAP
- BPN-9159 - W.S. (QTY. 4)
- MH1/4 20X3/4 - BOLTS (3" FROM EACH END & 16"O.C.)
- M13404 - L-ANGLE (QTY. 2)
- MPS-8X1 1/2 - FASTENERS (QTY. 4)
- OUTSIDE COVER - M24894 (FIELD APPLIED)
- MH8-18X3/4 TK2 - FASTENERS (3" FROM EACH END & 16"O.C.) x2



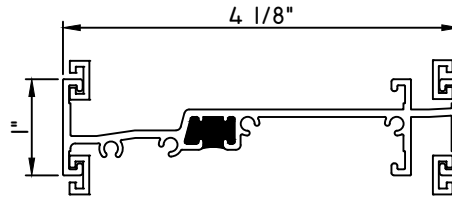
C600/W600 ACCESSORIES



1" STACK MULL

- M23841 - STACK MULL
- M23842 - INTERIOR COVER
- 970-300 - WEEP COVER
- QWP-M23844 - END DAM (QTY. 2)
- BRBTT46 - POP RIVET (QTY. 8)

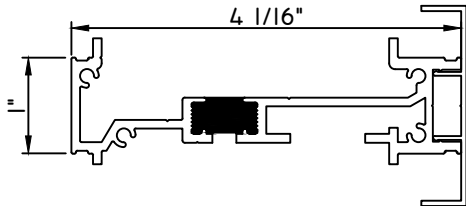
C600 Install ONLY



1" STACK MULL

- M24797 - STACK MULL
- M6270 - C-MULL (QTY. 2 OR 4)
- QWP-M24797 - END DAM (QTY. 2)
- BRBTT46 - POP RIVET (QTY. 8)
- 970-300 - WEEP COVER (QTY. 2)

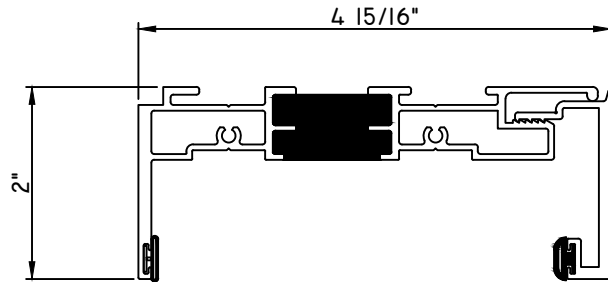
FACTORY APPLIED INSTALL ONLY



1" STACK MULL

- M23841 - STACK MULL
- M23843 - INTERIOR COVER
- 970-300 - WEEP COVER
- QWP-M23844 - END DAM (QTY. 2)
- BRBTT46 - POP RIVET (QTY. 8)

W600 Install ONLY



C600 RECEPTOR & CLIP

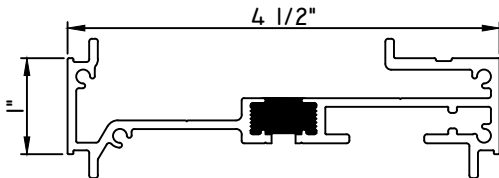
- M23135 - RECEPTOR
- M23136 - CLIP
- BPN-9159 - RECEPTOR W.S.
- BPN-4189 - CLIP W.S.

MUST BE USED WITH SUBSILL:

M23133

INSTALL TYPE:

PREASSEMBLED OR SQUARE CUT IN FIELD



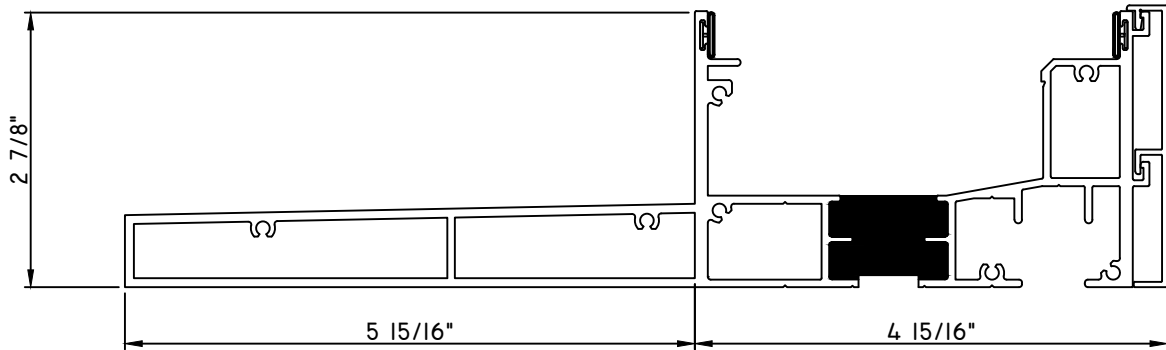
1" STACK MULL

- M24634 - STACK MULL
- 970-300 - WEEP COVER
- QWP-M23844 - END DAM (QTY. 2)
- BRBTT46 - POP RIVET (QTY. 8)

C600 Install ONLY



C600/W600 ACCESSORIES

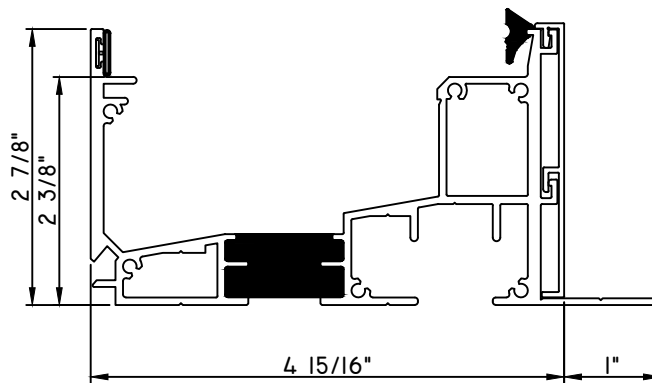


C600 SUBSILL (12LB WATER)

M24262 - SUBSILL
M24264 - COVER
BPN-9159 - W.S. x 2

MUST BE USED WITH RECEPTOR:

M24261



C600 SUBSILL (12LB WATER)

M23133 - SUBSILL
COVER - M23134
BPN-9159 - W.S.
4874-02-00-19 - WEDGE GASKET
ADDITIONAL PARTS FOR SQUARE CUT INSTALL:
QWP-23133 - END DAM (QTY. 2)
BRBTT46 - POP RIVET (QTY. 12)

MUST BE USED WITH RECEPTOR:

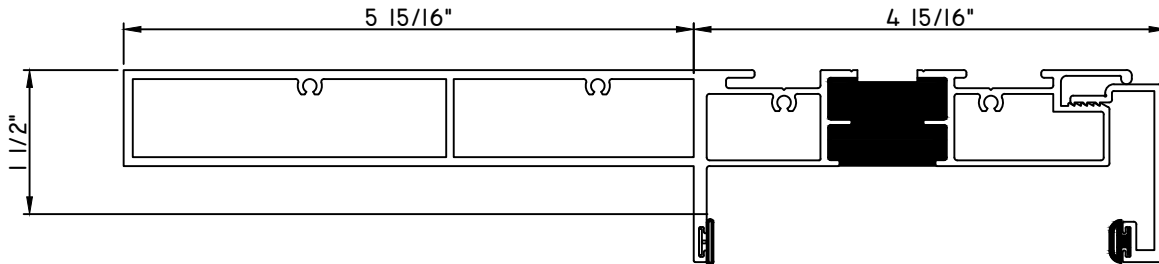
M23135

INSTALL TYPE:

PREASSEMBLED OR SQUARE CUT IN FIELD



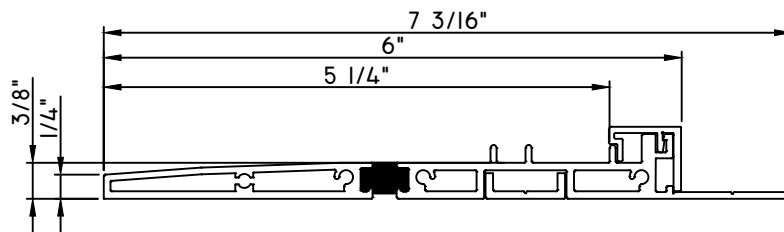
C600/W600 ACCESSORIES



RECEPTOR & CLIP

- M24261 - RECEPTOR
- M24263 - CLIP
- BPN-9159 - RECEPTOR W.S.
- BPN-4189 - CLIP W.S.

MUST BE USED WITH SUBSILL:
M24262



LOW PROFILE SILL FLASHING

- M24494 - SILL FLASHING (New Die)
- M24488 - U CHANNEL (New Die)
- M24491 - TD FLASHING FILLER (New Die)

FIELD APPLIED INSTALL ONLY