



# HISTORICAL SERIES

Single Hung | Casement | Project Out | Floating Operator | Fixed



**Products and Project References from the Historical Window Experts**

[www.QuakerCommercialWindows.com](http://www.QuakerCommercialWindows.com)



# Preserving traditional architecture is complex.

You know it. At Quaker Windows & Doors, we know it too. Yet at Quaker, it's nothing new to us. It has been a specialty of ours for years. In fact, we like to think we're experts at making this challenging task an easy one.

Developers, architects and historical consultants from across the country have consistently turned to Quaker for step-by-step assistance with their replication projects.

When it comes to being faithful to original window aesthetics, Quaker knows exactly what needs to be done and how to make it all work.

In this booklet, you will see dozens of treasured buildings that have been brought back to life, and Quaker has had the supreme honor of being a part of each. Amazingly, this isn't even close to covering all the historical projects containing Quaker windows. There are hundreds upon hundreds of others throughout the United States.

We encourage you to contact your Quaker sales representative or call our offices for more information on how Quaker can help you with your next historical renovation project.

Thank you for reading and for your interest in Quaker windows.



## THE TELLER HOUSE

(FORMERLY SHERIDAN TRUST & SAVINGS BANK)

Chicago, IL Built: 1925-1928

Windows: Single Hung

A unique shape plus a terra cotta design give this Chicago landmark character from top to bottom. The building's configuration was designed to fit within a triangular block in uptown Chicago. Initially 8-stories tall, four more floors would be added within four years. The original owner, Sheridan Trust & Savings Bank, failed during the Depression. However, for the next 80+ years, two other banks would keep this corner busy and relevant. Renovations have given this classical beauty a new lease as a mixed-use development.



# The Quaker Difference: More than meets the eye.

What distinguishes Quaker from all other window companies isn't always in plain sight. It's The Quaker Difference -- tangible and intangible assets working together to form the most sought-after windows in the historical market.

- It's recognizing and respecting the fact that there are no "cookie-cutter" historical structures. Every building of age, sometimes every window within that building, has its own individual flavor.
- It's using stronger, heavier gauge aluminum which is especially important when replicating and replacing large windows.
- It's multiple quality checks utilized throughout the manufacturing process to guarantee a paramount product.
- It's shying away from testing at entry-level, gateway sizes. Instead, we test using exaggerated and even maximum sizing. This ensures that the entire scope of a product's sizing will meet the advertised rating.
- It's our state-of-the-art powder paint facility, one of the largest in the United States. Unlike manufacturers that outsource their painting, Quaker controls the quality and consistency of our finish in-house.
- It's our Manufacturing Specialists, some with more than 40 years of window experience, providing unparalleled attention to detail.
- It's the know-how and insight of our entire sales team, whose knowledge of our products is matched by their understanding of requirements and attributes necessary to attain National Parks Service approval.
- It's a standard of craftsmanship and engineering excellence that we build into every historical product, distinguishing us from all other window companies in America.
- It's doing more than just selling windows. It's finding the right window solution for your historical project.



That's *The Quaker Difference*.



## GOLD MEDAL LOFTS

(FORMERLY GOLD MEDAL CAMP FURNITURE)

Racine, WI Built: 1894-1924

Windows: Project-Out, Single Hung,  
Fixed & Arched Fixed

Built in phases over a 30-year period, this multi-structure site is where Gold Medal Camp Furniture manufactured cots and chairs for the U.S. Military and National Guard. As well, GMCF made director's chairs for Hollywood for many years. In 1986, the company consolidated and moved production from this plant to Tennessee, leaving the entire campus to sit idly until new ownership took over in the mid-teens of the 21st century. The successful renovation, which included more than 600 Quaker windows, turned it into loft-style apartments. The full project was completed in 2020, a year after the entire complex was added to the National Register.

GOLD MEDAL LOFTS



# Historical Architecture is not impossible to match.

It just takes experience and know-how. At Quaker, we have both. From the word "go", we devote special attention to every detail. We recognize and respect the fact that each project, sometimes each window, has its own individual flavor. The before-and-after examples below show how architectural brilliance can be reproduced with the assistance of Quaker.

**HISTORICAL SOCIETY**  
(FORMERLY *BANK OF FARMINGTON*)  
FARMINGTON, IL



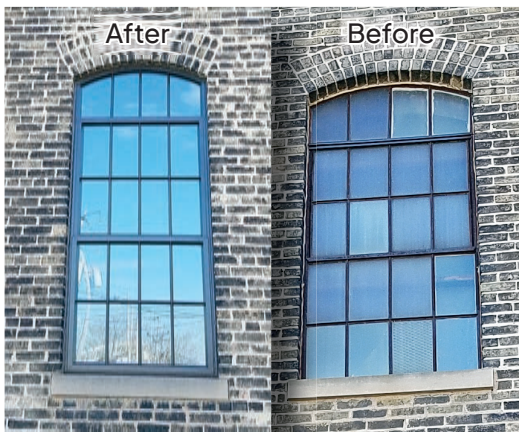
**CALDWELL HALL –  
CATHOLIC UNIVERSITY**  
WASHINGTON DC



**THE TERMINAL**  
(FORMERLY *PYLE-NATIONAL LIGHTING*)  
CHICAGO, IL



**GOLD MEDAL LOFTS**  
(FORMERLY *GOLD MEDAL FURNITURE*)  
RACINE, WI



**BIGELOW COMMONS**  
(FORMERLY *BIGELOW-HARTFORD CARPET MILL*)  
ENFIELD, CT





# Historical Product Selection Guide

Model	Series	Frame Depth	Structural Test Rating	Test Size	Air Infiltration	Water Resistance	U-Value Range <sup>#</sup>	SHGC Range <sup>#</sup>	STC Range <sup>x</sup>	OITC Range <sup>x</sup>
Casement	H450	3 ¼"	CW-PG90	36" x 60"	<.30	12	.39-.44	.14-.48	34-37	29-32
Project-Out	H450	3 ¼"	CW-PG90	60" x 36"	<.30	12	.39-.44	.14-.48		
Single Hung	H650	4 ½"	AW-PG60	60" x 99"	<.30	12			31-32	24-26
Fixed	H450	3 ¼"	AW-PG110	72" x 120"	<.10	15	.25-.32	.16-.57		
	H650	4 ½"	AW-PG90	60" x 99"	<.10	15				

\*-Ranges based on multiple Low-E/Argon I.G. combinations

<sup>x</sup>-Ranges based on multiple I.G. combinations

All ratings listed are NAFS certified. Periodic re-certification testing is required thus data shown may vary slightly.



## THE LOFTS AT CENTENNIAL YARDS

(FORMERLY SOUTHERN RAILWAYS HQ)

Atlanta, GA Built: 1912

Windows: Single Hung

More than a century ago, Atlanta was a boomtown for rail traffic. In 1912, Southern Railways, later known as Norfolk Southern, built two structures in "The Big Peach" -- a 3-story depot and 6-story office. In 1928, both were elevated to 8-stories and an enclosed walkway was added to connect the two structures. The complex was in use until 2005 when Norfolk Southern moved to midtown Atlanta. For a decade following, the structures stayed busy -- used for several film and TV productions including "The Walking Dead". Full renovations have since reinvented the complex into lofts, offices and retail spaces.

Credit: CoStar/Scott Harris



# Single Hung Windows



Historic structures and hung windows just seem to go hand in hand. With their straightforward, vertical operation and adaptability to almost any architectural design, hung windows became quite a common choice of architects in the mid-1800s, and they have stayed in the architectural world's good graces ever since.

## RESIDENCES AT HALLE (FORMERLY HALLE'S DEPT. STORE)

Cleveland, OH Built: 1908

Windows: Single Hung and Fixed

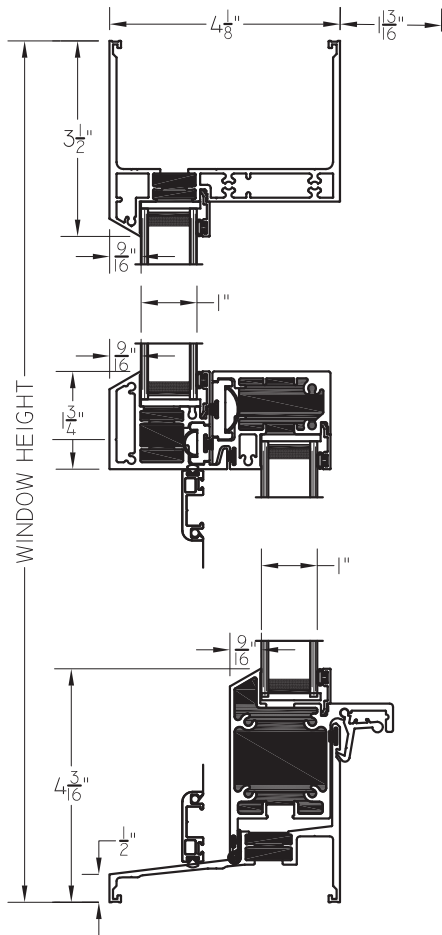
The 12-story Halle Building was always the star location for Halle's, a high-end emporium chain with 15 stores. When completed, the 195-foot giant was the tallest building ever in "The Sixth City" (Cleveland's nickname in the early 1900s as it was the 6th largest U.S. city). Halle's, like so many other department stores located in once-busy downtown areas, fell victim to the suburban mall fad and shut down in 1982. As well, the building itself became an insignificant part of Cleveland's business scene. That changed when developers revamped the directive in the 2010s. Retail and offices remained on lower floors while modern lofts were added to the upper floors.



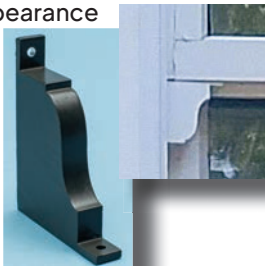


# Quaker Historical Single Hung Windows

## H650 (AW60)



- 4 1/8" frame depth
- Distinctive, symmetrical sightlines
- 1" insulating glass
- SolidCore thermal break system
- Gravity latch lock system
- Matching picture window
- Extruded aluminum screen with aluminum wire mesh
- Multiple panning, receptor and mull systems
- Finless main frame
- Optional ogee blocks to simulate historical appearance



## THE WARRIOR HOTEL

Sioux City, IA Built: 1929-1930

Windows: Single Hung and Fixed

A lack of quality hotels in Sioux City in the late 1920s led to the development of The Warrior Hotel. Construction began in 1929. In spite of the stock market crash months later and ensuing economic woes, work continued and the hotel was completed in 1930. It was popular for 40+ years yet met a quick demise and closed permanently in mid-'70s. Almost a half century later, the vacant Historical Register member -- along with the Davidson Office Building next door which was built in 1913 -- were purchased by a major hotel chain who renovated both. They now house hotel rooms plus upscale apartments.

## CONRAD LOFTS

(FORMERLY HILTON HOTEL)

Plainview, TX Built: 1929

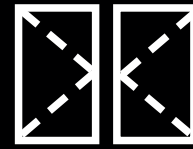
Windows: Single Hung

Famed hotel tycoon Conrad Hilton was in attendance when the Plainview Hilton was dedicated in 1929. For 55 years, it was Plainview's trendy place to stay, dine, gather, and party. Eventually, its popularity waned and it closed. After a long vacancy, developers changed that narrative by renovating the once lively Hilton into loft apartments.





# Casement Windows



In many eyes, casements are often seen as the ultimate window for historical projects. They can be wide, thin, tall or short and always bring the slim sightlines and ageless appearances found in architecture from America's Gilded Age and Progressive Era.



## DISTRIKT HOTEL *(FORMERLY SALVATION ARMY HEADQUARTERS)*

Pittsburgh, PA    Built: 1924

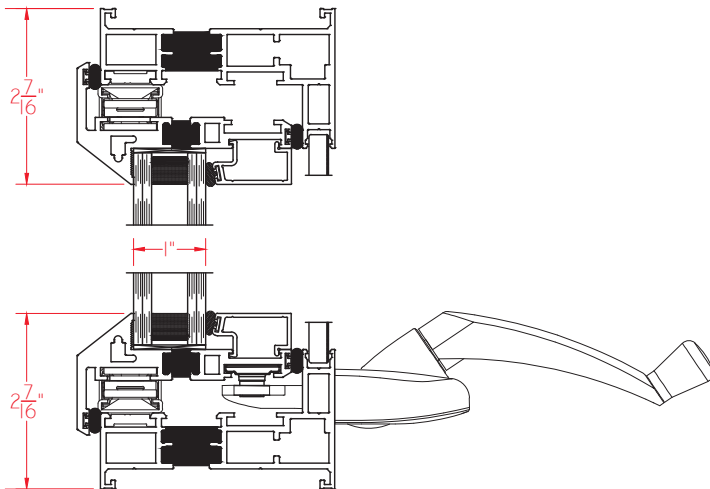
Windows: Casement

The Salvation Army Headquarters was a significant addition to Pittsburgh's cityscape in the 1920s. Usage of the 9-story building spanned several fronts. Along with housing Salvation Army offices, it also offered vital and practical services to the poor and gave long-term accommodations to professional women a.k.a. an Evangeline Residence. These many uses kept the location buzzing at all hours of the day. While the Evangeline Residence closed in 1980, the remainder of the building's functions kept chugging along until the Salvation Army relocated its HQ around 2009. Developers bought the property 5 years later, eventually turning it into a boutique hotel. It was also added to the National Register in 2016. The unique spelling of "Distrikt" is in honor of the rich Dutch roots of New York City, where the original Distrikt Hotel is located near Times Square.



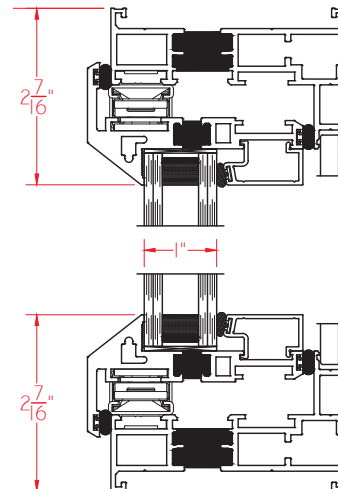
# Quaker Historical Casement Windows

## H450 Crank-out (CW90)



- 3 1/4" frame depth
- Distinctive, slim sightlines replicate steel-window appearance
- 1" insulating glass
- SolidCore thermal break system

## H450 Push-out (CW90)



- Heavy-commercial locking system
- Matching picture window
- Multiple panning, receptor and mull systems
- Finless main frame



### MAYWOOD SUPPORTIVE LIVING

(FORMERLY BAPTIST RETIREMENT HOME)

Maywood, IL Built: 1929

Windows: Casement, Fixed and Single Hung

The Baptist Retirement Home was a 5-story nursing home/retirement facility built by the local Baptist Old People's Home Organization. It stayed as such until 2005. Developers recently brought this National Register member back to life as a Senior Support and Living Center. Their work subsequently garnered the 2023 Landmarks Illinois Preservation Award for Best Adaptive Reuse.



### WISTERIA MANSIONS

Washington, DC Built: 1926

Windows: Casement, Fixed and Single Hung

This 8-story, Beaux-Arts building sits less than a mile from the White House. Its name is derived from The Wisteria House, a home built during the Civil War which originally sat on the property. That home was leveled in 1924 to make way for this structure, which was an apartment house until 1984. Recent renovations and new Quaker windows have completely revived its facade.



# Project-Out Windows



Project-Out was a popular architectural window option during the late 19th and early 20th centuries. Simplistic yet efficient venting plus a flexibility to fit anywhere from the bottom floor to the penthouse made Project-Out windows the crux of many a design.



## TRENTON MILL LOFTS

(FORMERLY TRENTON COTTON MILL)

Gastonia, NC Built: 1897

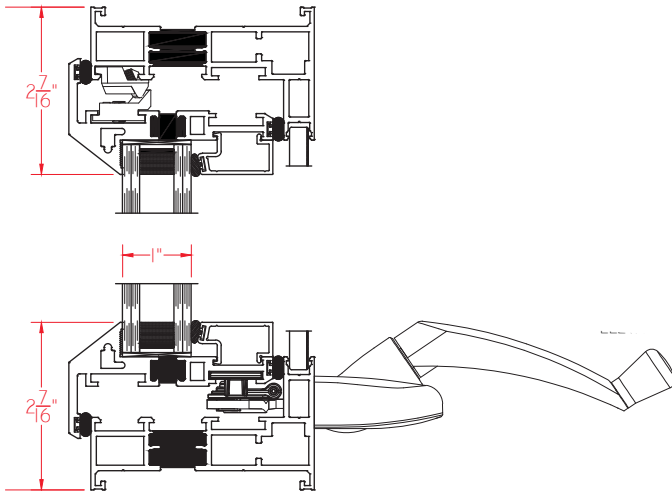
Windows: Single Hung, Fixed with Floating Project-Out, Geometric Fixed,  
and custom break metal infill to replicate arched appearance

In 1920, Gastonia, NC had become known as the "City of Spindles" because there were 30 textile mills there. Not bad for a city with a population around 13,000. The Trenton Mill was Gastonia's second textile factory and quite significant, in that it produced combed yarn -- a smoother, stronger version of yarn that was better for weaving and more comfortable for the wearer. Trenton Mill stayed in business for the better part of the century before eventually shutting down. After being vacant for a few years, the unique U-shaped building has been reborn as loft apartments.



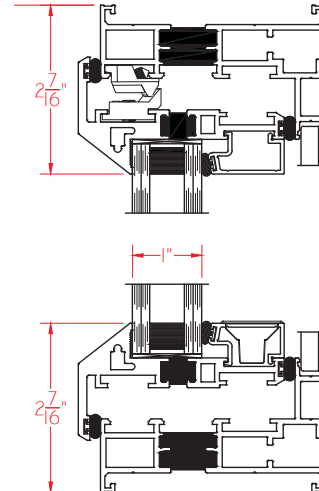
# Quaker Historical Project—Out Windows

## H450 Roto (CW90)



- 3 1/4" frame depth
- Distinctive, slim sightlines replicate steel-window appearance
- 1" insulating glass
- SolidCore thermal break system

## H450 Push-Out (CW90)



- Heavy-commercial locking system
- Matching picture window
- Multiple panning, receptor and mull systems
- Finless main frame
- Main frame with or without nailing fin



**THE DUFFEY LOFTS**  
(FORMERLY C.J. DUFFEY PAPER CO.)  
Minneapolis, MN Built: 1923

**Windows: Project-Out, Single Hung and Fixed**  
Found in Minneapolis' North Loop (NoLo for short), the first occupant of this building was George R. Newell & Company, a local grocery merchant. In the 1940's, C.J. Duffey Paper Company took over and was a mainstay in the Twin Cities until 2016. Developers have since given the 7-story building a total overhaul. That included the original large windows found on every level which were made that size to give employees plenty of natural light.



**THE FOX BUILDING**  
(FORMERLY NOXZEMA MFG.)

Baltimore, MD Built: 1926

**Windows: Project-Out and Fixed**

Baltimore drug store owner George Bunting was experimenting with skin creams when he fortuitously invented Noxzema. The new cream took the country by storm, forcing Bunting to build this 4-story facility, using it for 40 years. The building would be purchased by a concrete coatings and additives company who stayed until 2017 before moving out to make way for a full renovation. A joint venture to turn it into live-work apartments designed for artists was finalized a year later with new Quaker windows being a focal point.



# Fixed Windows



Whether paired with operating windows or set by themselves, non-operable fixed window units, sometimes referred to as picture windows, play a key role in breathing life back into nearly every storied structure being renovated.



## CONWOOD FLATS

(FORMERLY AMERICAN SNUFF COMPANY)

Memphis, TN Built: 1909-1957

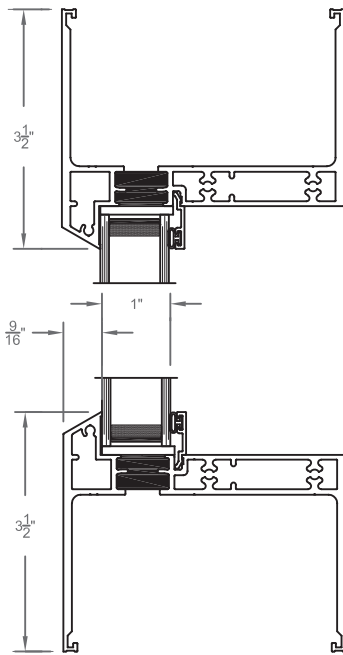
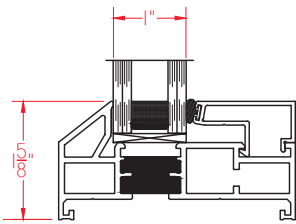
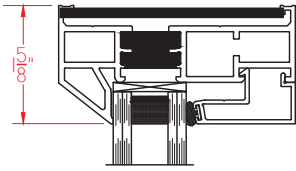
Windows: Fixed

Nine buildings made up what was once known as the American Snuff Company. It's strategic location -- in the appropriately named "Memphis Snuff District" -- allowed the company to flourish as their campus was near both rail and river transportation. At its peak in the mid-1950s, ASC had more than 500 employees and was the 2nd largest dry snuff manufacturer in the country. In 1966, the company changed its name to Conwood, LLC, only to change it back to ASC in 2010. However, the final name change was shortlived as the company decided to shut down the entire operation a year later. A full overhaul of the property has re-established it as a vibrant, uptown living complex. New apartments were also added to expand the development, which now goes by Conwood Flats in homage to previous ownership.



# Quaker Historical Fixed Windows

## H450 Fixed (AW110)    H650 Fixed (AW90)



- H450 Frame Depth - 3 1/4"
- H650 Frame Depth - 4 1/8"
- Distinctive, symmetrical sightlines
- 1" insulating glass
- Finless main frame
- SolidCore thermal break system
- Corresponding operating windows mate with each fixed window series
- Multiple panning, receptor and mull systems



## BOOK TOWER

Detroit, MI    Built: 1926

Windows: Fixed and Single Hung

Contrary to Motor City lore, Book Tower was never a library, book binding facility or publishing office. It was named after three brothers named Book who commissioned it in the early 1920s. Once built, the 38-story, 475' tall skyscraper immediately became the city's tallest building. It was imposing and intricately designed, but it wasn't well-thought out. The architect didn't take into account fire evacuation, which led to the future addition of a maze of exterior fire escapes. The architect also used a porous limestone for the facade which sucked up air pollutants, making it virtually impossible to keep clean. Nonetheless, Book Tower was hard to ignore and became a bustling business center for decades. Book Tower was named to the National Register in 1982. For more than 25 years, a revolving door of owners, each with renovation ideas, came and went. That ended in 2015 when a local real estate company and a New York architectural firm purchased Book Tower and began a painstaking renovation from top to bottom with a goal of turning it into retail, office space, residential and hospitality. Nearly 2,500 of Quaker's historically-correct windows were an extensive part of Book Tower's revival.



## BRISTOL RENAISSANCE CENTER

(FORMERLY E.W. KING BUILDING)

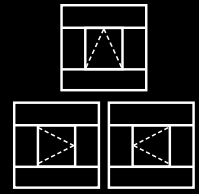
Bristol, TN    Built: ca 1920

Windows: Fixed

Part of the Bristol Commercial Historic District, this structure was a wholesale dry goods business owned by E.W. King, a local businessman and philanthropist. King's 4-story warehouse was one of the largest in the south and distributed dry goods over a 7-state region. It later became a storage facility, then was converted into a new-look commercial office and manufacturing building with Quaker historical windows playing an enormous role.



# Floating Operator Windows



Nothing says "historic industrial building" like sizable, multi-lite steel windows with a single operating window in the center. Quaker's historical products can replicate that appearance using a singular main frame featuring a Project-Out or Casement window floating amid surrounding fixed units, hence the term "Floating Operator".



## MAKERS MARK DISTILLERY

Loretto, KY Built: ca. 1880

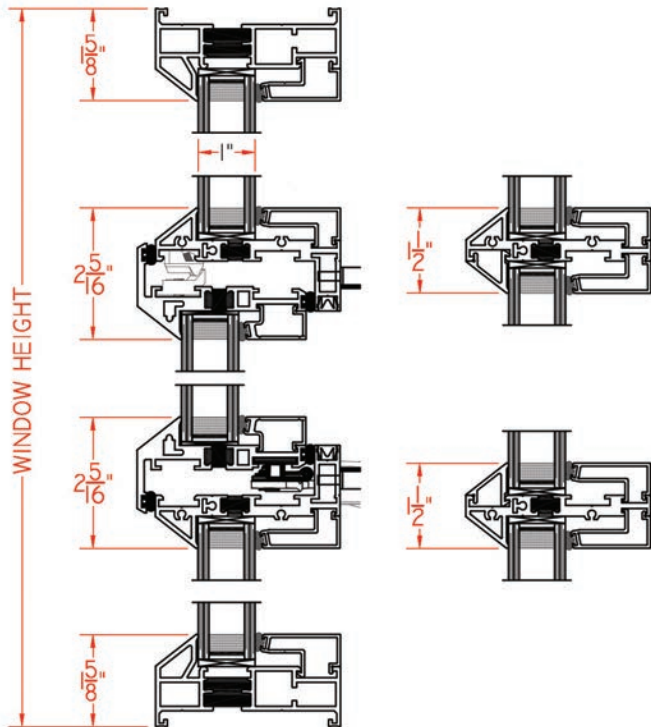
Windows: Casement and Fixed with Floating Project-Out

Just outside of the small town of Loretto, KY sets the campus of one of the most recognizable names -- and bottles -- in the bourbon industry. The buildings found on the Maker's Mark compound were all built in the 1880s by the original property owner and distiller. That distillery shut down during prohibition but years later, 1953 to be exact, the Samuel family purchased the site and soon began making their own brand of bourbon. The distillery would later be added to the National Register (1974) and designated a National Historic Landmark (1980). While all buildings on the campus will eventually have windows replaced, the first structure completed in 2019 houses the cookers and fermentation tanks.



# Quaker Historical Floating Operator Windows

## H450 Series



- 3 1/4" frame depth
- 1" Insulating Glass
- Distinctive, symmetrical sightlines
- Continuous main frame without fins
- SolidCore thermal break system
- Many fixed/operable combinations available
- Optional screen with wicket door access
- Multiple panning and receptor systems



## PYRAMID LOFTS

(FORMERLY PYRAMID ELECTRIC SUPPLY CO.)

Philadelphia, PA Built: 1922

Windows: Fixed with Floating Project-Out

A furniture company originally occupied this triangular-shaped structure. In 1961, Pyramid Electric purchased it and operated there until the new millennium. After that, the Pyramid Building, as it had become known in Philly, simply sat idle for 15 years. A local development group snapped up the building in 2016 and began a total rehab which included the replacement of every one of the large steel windows.



## THE ASSEMBLY

(FORMERLY FORD MOTOR ASSEMBLY PLANT)

Indianapolis, IN Built: 1914

Windows: Arch Fixed, Fixed with Floating Project-Out

As motor car popularity grew in the early 1900s, Ford Motor Company decided to build this assembly plant in Indianapolis. Production at the new plant exceeded expectations quickly. By 1923, it was rolling out 85,000 vehicles a year. But when the Great Depression hit, the Indy plant became a casualty, closing in 1932. Decades later, after years of non-use and little maintenance, the structure had become an eyesore. That changed in 2017 when a development firm bought the property and eventually transformed it into a mixed-use facility, gaining national accolades along the way.



# Custom Shape Windows

Builders, architects and craftsmen from years ago frequently integrated unique window shapes into their designs to set their work apart. Quaker sets itself apart too by being able to mold historically-correct fixed and operating units into eye-popping, geometric replications.



## JACK ENTERTAINMENT (FORMERLY ST. MARY'S SCHOOL) Detroit, MI    Built: 1868 Windows: Arch Head Single Hung

After sitting empty for nearly a decade, the old St. Mary's School in Detroit's Greektown neighborhood, was reinvented as the headquarters for a casino ownership group. The structure, built shortly after the Civil War's end, served not only as a school, but also as an orphanage. It was also a full-time residence for Catholic sisters. In 1966 the school closed, and it became St. Mary's Community Center for several years. The building has since been recognized as an official historic site by the state of Michigan. Recent restorations included replacing the tall, arched hung windows with Quaker historical windows.



# Quaker Historical Custom Shape Windows



Many more custom geometric shapes are available



## IRON BUILDING

(FORMERLY COLONIAL TRUST CO.)  
Pittsburgh, PA Built: 1875-1881

Windows: Single Hung and Arch Head Single Hung

Settled amid the Steel City's Central Business District is the Iron Building, one of a trio of adjoining office buildings known to locals as "The Three Sisters". These 4-story structures, with stunning cast iron facades, have been home to many small businesses over the years. All 3 have been rehabbed, with help from Quaker's ability to match all the arched windows and the unique frame curvatures found on each story.



## TAPESTRY ON THE HUDSON

(FORMERLY THE MOORADIAN BLDG.)  
Troy, NY Built: 1899

Windows: Single Hung, Arch Head Single Hung and Arch Trapezoid Single Hung

The shirt collar and cuff industry was the core of the Troy's industrial footprint between 1880-1920, earning it the nickname "Collar City". Not surprisingly, the first inhabitant of this building was a cuffs/collars maker. Newer generations knew the building as home to Mooradian Furniture. It sat empty for a decade until a non-profit development group stepped in, remaking it into affordable housing. The project won an award from the Preservation League of New York State, with partial thanks to Quaker's ability to mimic the many arched windows to a tee.



## REVOLUTION MILL

Greensboro, NC Built: 1900-1915

Windows: Single Hung, Arch Head

Single Hung and Arch Head Fixed

For textile magnates, brothers Caesar & Mosen Cone, this wasn't the first mill they built, but it was definitely their most successful. It was the first flannel mill in the South, and by the 1930s, it was the largest exclusive flannel producer in the world. It operated until 1982. In '84, the entire complex was added to the National Register. After being sold three times over a short period, the last owner refurbished it into a live/work complex. The wide and tall industrial windows, including all arched units, were supplied perfectly by Quaker.



## BOURY LOFTS (FORMERLY BOURY WAREHOUSE)

Wheeling, WV Built: ca. 1895

Windows: Arch Trapezoid Single Hung

In its heyday, the centerpiece of Wheeling's business district was Bours Warehouse. It was home to mostly food-related businesses, including a biscuit manufacturer, a grocer, a coffee roasting company and others. In the mid-2010s, a local development group saw potential in the 6-story building with its unique 5-sided footprint, and refurbished it into apartments. The project included spot-on replicas of the original arched trapezoidal windows. The entire body of work, including the infamous Bours water tower, received two prestigious honors: an NAHB Best Adaptive Reuse Award and the Preservation Alliance of West Virginia's Award for Best Use of Historic Tax Credits.



# Accessories

## Replicating Every Aspect

Quaker can provide a multitude of pre-installation accessories such as panning, trim, break metal, and receptor dies. However, very few buildings ever don the same architecture. Fortunately, that's never an obstacle for Quaker which has decades of experience supplying historical accessories, and producing job-specific accessory dies when necessary.



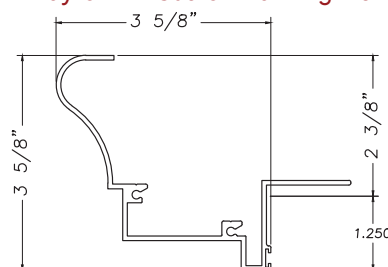
### DRAYTON LOFTS (FORMERLY DRAYTON MILL)

Spartanburg, SC Built: 1902-1960

Windows: Single Hung and Fixed

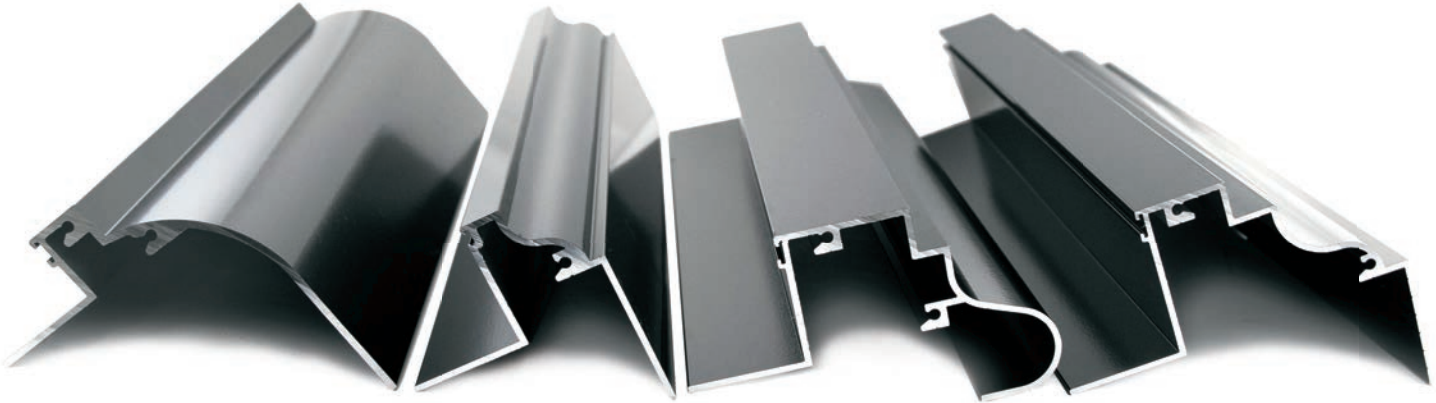
Drayton Mill was a big part of the thriving textile industry that served South Carolina during a major part of the 1900s. There was a time when 1,200 people were employed at Drayton Mill. Over the years, it was expanded and altered, a common practice among textile mills as they adapted to changes and innovations in manufacturing technology. Additional buildings were added all the way up to 1960. The demise of Drayton Mill began in the 1980s and it would officially shut down in 1995. The 3-story structure would be mostly vacant until 2007 when a local investor acquired it. In time, it was converted into luxury lofts. A specially designed panning die was developed to replicate the original window frame. Meanwhile, Drayton Mill's historical clout was recognized with a spot on the National Register in 2012.

Drayton Mill Custom Panning Die





# Quaker Historical Accessories



This is a sampling of the many historical panings and accessories Quaker has available. Custom profiles available.



## WILEY APARTMENTS

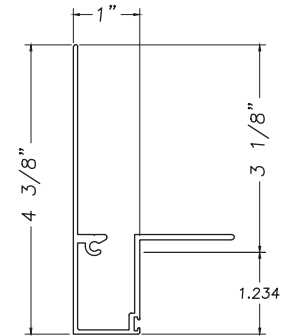
(FORMERLY WILEY'S DEPT. STORE)

Hutchinson, KS Built: 1913

Windows: Single Hung

In 1911, Vernon Wiley and his business partner wanted a structure that would be twice the height of any other in downtown Hutchinson to house their dry goods business. Banks were reluctant but Wiley eventually secured a loan. Local lore says his banker told him "If you have nerve to build an 8-story skyscraper in the middle of the prairie... we have nerve enough to lend you the money." In 1913, the doors to Wiley's Dept. Store opened and stayed that way for 72 years. Developers have since renovated The Wiley, turning it into lofts and commercial spaces.

Wiley Building Custom Panning Die



## THE WINDEMERE

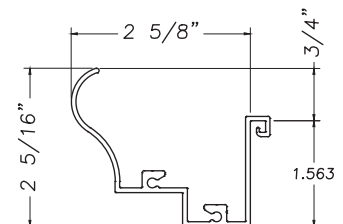
(FORMERLY COMMODORE HOTEL & CHERRYWOOD HOTEL)

Kansas City, MO Built: 1923

Windows: Single Hung

It is believed this was originally two separate buildings -- The Commodore Hotel and The Cherrywood Hotel/ Apartments -- which were later connected by a center structure early in their history. The Cherrywood building features a distinctive curvilinear entrance, while both 4-story buildings contain neo-classical elements throughout. The entire structure has now been remade into apartments.

Windemere Custom Panning Die





# Glass and Grids

## Countless Configurations

Whether glass specs call out sound control, safety necessities, thermal values, special tints, custom grid bars, or custom grid patterns - or a combination of some or all - Quaker has the products and know-how to accommodate your project requirements.



Credit: BelleCitySquare.com

### THE MILTON

(FORMERLY OLD-MERCHANTS NATIONAL BANK & TRUST CO.)

Battle Creek, MI Built: 1931

Windows: Fixed with custom grid

Back in the 1830s, Milton Township was the name of the settlement that would eventually become Battle Creek. Hence the new name which was chosen by developers who remade the Old-Merchants National Bank & Trust Company building into a mixed-use facility. Found on the National Register, the Art-Deco, 19-story structure was a beehive of activity for many years as Old-Merchants Bank was the preferred financial institution for several of the large cereal companies in the area. Surprisingly, the early 21st century saw the structure sit unused for 10 years. The idle time led to a heavy dose of deterioration until a local development group launched renovations in 2019. New Quaker historical windows with custom grids were a large part of the 3-year project.



# Applied Grid Profiles



Grid profiles shown above are just a sampling of the many Quaker has available. Custom profiles available.

# Glass Choices

- Pane thickness:  $\frac{3}{32}$ ",  $\frac{1}{8}$ "  $\frac{5}{32}$ ",  $\frac{3}{16}$ ",  $\frac{1}{4}$ ",  $\frac{5}{16}$ "
- I.G. thickness: 1" (2-pane),  $1\frac{3}{8}$ " (triple pane)
- Glass Types: Dual Silver Low-E, Triple Silver Low-E, Interior Pane Low-E, Tempered Safety Glass, Laminated, Spandrel, Solar-Cooled, Obscure (for privacy), Bird Glass, Tints, and more



## 812 LOFTS

(FORMERLY CHURCHILL'S DRUG CO.)

Peoria, IL Built: 1917

Windows: Project-Out & Fixed

The tallest building in the National Register's Peoria Warehouse District, it has now been redeveloped as lofts. Historically-correct Quaker windows and retro-matching grids can be found throughout.



## RYSERSON HALL

### NORTHWEST OKLAHOMA STATE UNIV.

(FORMERLY FINE ARTS BUILDING & SCIENCE HALL)

Alva, OK Built: 1906-1907

Products: Single Hung, Fixed, Arch Head Fixed and Elliptical Fixed with custom Black Spandrel glass in all transoms

This structure has been updated and renovated several times over the years to meet the changing educational landscape of NWSU. The most recent work saw new Quaker windows added, customized with a special SDL grouping. Within all the transom windows, black spandrel glass was added for aesthetics, privacy and sun protection.

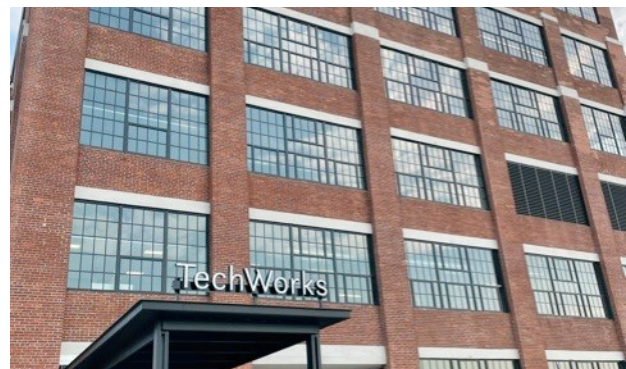


## CHECKER BUILDING (FORMERLY CHECKER CAB CO.)

Detroit, MI Built: 1927

Windows: Project-Out & Fixed with custom glass panes

Found on the National Register, Detroit's long-time headquarters for Checker Cab was recently restored into lofts and retail spaces. With 3 major thoroughfares -- I-75, John Lodge Freeway and Michigan Avenue -- all within earshot, thicker glass panes were used to elevate STC/OITC values.



## TECHWORKS

(FORMERLY JOHN DEERE TRACTOR CO.)

Waterloo, IA Built: 1928

Windows: Fixed with custom grid

John Deere built this manufacturing plant for their GP (General Purpose) tractor model. Forge ahead to the 2000s and the building now hosts several tech businesses. Renovations included huge Quaker fixed windows with a custom grid design, incorporating wider SDL bars to simulate operable units.



# Colors and Finishes

## The Possibilities are Endless



Don't let the necessity for a specific color stop your project. Along with our 30+ "Quick-Pick" colors at your fingertips, **ANY** color in the spectrum is available with our custom color capabilities. Choose between a 2604 standard finish or 2605 upgrade finish for most colors.



### COLT GATEWAY (FORMERLY COLT EAST ARMORY)

Hartford, CT Built: ca. 1865

Windows: Project-Out, Fixed and Single Hung Colors: Holly Green, Colt Green (Custom) & Legacy Grey (Custom)

Around the end of the Civil War, the widow of Colt firearm inventor and industrialist Samuel Colt, ordered this 6-story armory to be built in the exact same place where the original Colt Armory had burned down a year earlier. Once done, it was larger, more fireproof and more decorative with an Italian-Renaissance look. In addition, the new Colt Armory carried over the most dramatic feature of the original; the blue onion dome with gold stars, topped by a gold orb - the undisputed Colt symbol. Colt Mfg. occupied the building until 1994 when it consolidated operations with their West Hartford location. Today, the armory has been transformed into something completely different; a live/work community that contains residential and commercial spaces. The project used three colors as it pertained to windows. Some windows were painted Quaker's popular Holly Green. However, a majority showcased one of the two custom colors requested.



# Quaker Colors and Finishes



## EL VADO PLACE

(FORMERLY EL VADO AUTO COURT MOTEL)

Albuquerque, NM Built: 1937

Windows: Pushout Casement & Fixed

Color: Signal Blue (Custom)

The El Vado Auto Court, with its Pueblo-Revival style, is a preeminent example of pre-WWII southwestern motels. For travelers on Route 66, it was a popular layover for decades, and its Native-American neon sign was a signature sight. Quaker historical windows, painted a custom blue to mimic the originals, were a large part of the restoration of this National Register member.



## WOOLEN MILL LOFTS

(FORMERLY APPLETON WOOLEN MILL)

Appleton, WI Built: 1882-1962

Windows: Fixed with Floating Project-Out

Color: Black with Optional 2605 Finish Upgrade

Appleton Woolen Mill was one of many businesses that sprouted up in the late 1800s to support Wisconsin's paper industry. The mill made paper-maker's felt, an essential component to shape pulp into continuous sheets of paper. The long-abandoned mill has now been renovated into apartments. For the project, an upgraded 2605 paint finish was spec'ed. The reasons? Since the building sits on the banks of the Fox River, is less than an hour from Lake Michigan, and has to endure the extreme elements prevalent to north central Wisconsin, 2605 would better resist moisture and weatherization damage.



## ALLIED ARTS BUILDING

Lynchburg, VA Built: 1929-1931

Windows: Project-Out & Fixed Color: Oregon (custom)

Erected over a 2-year period during the onset of The Great Depression, Lynchburg's Allied Arts Building was a busy office and professional space for many years. The Art-Deco skyscraper was 17 stories and the tallest building in Lynchburg for decades. Its significance faded late in the century, yet its historical value was never questioned, as evidenced by its addition to both the Virginia Landmarks Register and the National Register. As early as 2013, a redevelopment plan for AAB was being discussed. It finally kicked off in 2019 and was completed approximately 2 years later. A custom window color to parallel the structure's greenstone base, and compliment the yellow brick, was requested, and Quaker delivered an exemplary match.



# LEED Certification



More than ever, professionals in the historical field are looking beyond finding an exact window replica. In the name of LEED, they want better "Green" performance too. U-values, Solar Heat Gains, Recycled Material Percentages -- these have taken on prized importance. Quaker's Historical product family has the make-up to help generate LEED point possibilities.



## THE WILLIAM (FORMERLY HORLICK'S MALTED MILK COMPANY) Racine, WI    Built: 1882-1910 Windows: Single Hung and Fixed

William and James Horlick had this structure built in the 1880s to house the making of their newly-invented product known as malted milk. Malted milk would go on to become a great success, not only in the U.S. but in many other countries around the world. Eventually, a total of fourteen buildings would make up the entire Horlick Malted Milk Company campus in Racine. Four of them have been added to both the Wisconsin State Register and the National Register. That includes this 3- and 4-story Gothic Revival structure. Although the company was thriving, it began selling some of their buildings on this complex in the 1950s. By 1975, all of Horlick's buildings in Racine had been sold to various entities. In late 2019, after years of vacancy, developers began a meticulous refurbishing process for what is now known as The William -- a large apartment community named after one of its original owners. The project also garnered acclaim as a LEED Gold recipient.

Quaker Window Products, Inc. does not make any guarantee of LEED-accreditation or Level Certification with the use of Quaker products.



1-800-347-0438





## BEEKMAN RESIDENCES (FORMERLY TEMPLE COURT)

Manhattan, NY Built: 1881-1883  
Windows: Single Hung

From the get-go, this 10-story belle was a busy office building, with major tenants such as the NRA occupying space. Soon after, Temple Court really hits its stride, becoming home base for 200+ white collar businesses such as lawyers, publishers, press agents, and accountants. It remained an office building into the early 2000s. After a dozen vacant years, the building got a reboot as a LEED-certified luxury hotel and apartments.



## DRURY PLAZA BROADVIEW (FORMERLY BROADVIEW HOTEL)

Wichita, KS Built: 1922  
Windows: Single Hung

Built along the banks of the Arkansas River, The Broadview quickly became a popular stop along the Chisholm Trail, as well as a terminal for the Arkansas Valley Interurban Railroad. During Prohibition, The Broadview basement was the town's only "speakeasy". And since Wichita is known as the "Air Capital of the World", it is apropos that famed pilots Amelia Earhart and Charles Lindbergh were once hotel guests. Beginning in 1940, ownership of the building changed hands many times. Eventually, the Drury Hotel chain renovated the handsome structure, building a multitude of green features into the rehab, earning LEED certification.



## GLOBAL WATER CENTER (FORMERLY MOLITOR PAPER BOX FACTORY)

Milwaukee, WI Built: 1904  
Windows: Fixed

Sitting amid Milwaukee's historic Florida & 3rd Industrial Ward, this 7-story brick structure was actually the tallest building in the district when it was completed. It was built for Molitor Paper Box Factory. Renovations have now turned the building into the LEED-Silver Global Water Center. It is the world headquarters for The Water Council, as well as other water-related businesses and research companies.



### More LEED-certified historical projects containing Quaker windows:

#### LEED Platinum

- @4240 - St. Louis, MO (former Southwestern Bell Telephone)
- Crosstown Concourse - Memphis, TN (former Sears Building)
- Green Exchange - Chicago, IL (former Cooper Lamps)

#### LEED Gold

- Capewell Lofts - Hartford, CT (former Capewell Horse Nail Co.)
- Power House Building - St. Louis, MO

#### LEED Silver

- Arabella Apts. - Racine, WI (former Horlick Malted Milk Plant)
- Cupples Station #1 - St. Louis, MO
- The Laurel - St. Louis, MO (former Stix, Baer & Fuller Dept. Store)

#### LEED Certified

- Brew House - Milwaukee, WI (former Pabst Brewing)
- Drury Plaza - Santa Fe, NM (former St. Vincent's Hospital)
- Kaley Center - Wheeling, WV (former Riley Building)
- Mary Leila Lofts - Greensboro, GA (former Mary-Leila Cotton Mill)
- McCabe Hall, Marquette University - Milwaukee, WI
- Shoreland Apartments - Chicago, IL (former Shoreland Hotel)
- Studio Gang Architecture - Chicago, IL (former Polish National Alliance Building)
- W.G. Pearson Magnet School - Durham, NC (former Hillside High School)



# Renovation Realized

Find Quaker in other recently completed historical projects.

## ALABAMA

- Macaroni Lofts - Birmingham (former Birmingham Macaroni Co.)

## ARKANSAS

- AC Hotel - Little Rock (former Hall-Davidson Bldg.)
- Administration Bldg. - Fayetteville
- Friendship Aspire Academy - Little Rock (former Garland E.S.)
- ScholarMade Achievement - Little Rock (former Mitchell E.S.)

## CALIFORNIA

- Tru Bankers Hill - San Diego (former Rees-Stealy Med. Clinic)
- V.A. Building 207 - West Los Angeles (former V.A. Hospital)

## COLORADO

- The Slate Hotel - Denver (former Emily Griffith Opportunity School)

## CONNECTICUT

- Barnum House Apts. - Bridgeport (former Barnum Hotel)
- Cherry Street Apts. - Waterbury (former Waterbury Clock Factory)

## GEORGIA

- 11th Street YMCA - Columbus
- 1912 Bunn - Waycross (former Bunn Building)
- Edgewood Center - Snellville (former Coca Cola Bottling Plant)
- The Mill - Atlanta (former Dupre Excelsior Mill)

## ILLINOIS

- 330 S. Wells Apts. - Chicago (former Insurance Center Bldg.)
- 630 W. Arlington - Chicago (former U.S. Cold Storage)
- 2055 W. Pershing Rd. - Chicago (former mfg. facility)
- Adams & Oak - Peoria (former Federal Building)
- Army Corps of Engineers District Bldg. - Rock Island
- Burnham Schoolhouse Apts. - Chicago (former Wing School)
- Goldblatt's Building - Chicago (former Goldblatt's Dept. Store)
- Lawson House - Chicago (former YMCA of Metro Chicago)
- The Alfred - Chicago (former Hartman Bldg.)
- The Mark Twain - Chicago (former Mark Twain Hotel)
- Vequity LLC - Chicago (former Fulton Market Warehouse)
- Winkler Lofts - Peoria (former Winkler Meats)

## INDIANA

- Ascend Hotel - Elkhart (former Hotel Elkhart)
- Backstay Lofts - Union City (former Backstay Welt Mfg.)
- Fourteen91 Lofts - Muncie (former Muncie Trade School)
- Historic Walnut Square - Terre Haute
- Miller Parrot Lofts - Terre Haute (former Miller Parrot Bakery)

## IOWA

- 220 E. 9th - Dubuque (former Kretschmer Mfg. Co.)
- Wilson Lofts - Clinton (former Clinton Bridge & Iron Works)

## KANSAS

- Downtown Gym - Leavenworth (former Immaculata H.S.)
- Kansas Ave. Lofts - Topeka (former Parker-Davis Mercantile)
- Y Lofts - Kansas City (former YMCA of KCK)

## KENTUCKY

- Swann Warehouse - Murray (former Swann Tobacco Co.)

## MARYLAND

- Foundry Lofts - Baltimore (former Bell Foundry)
- WRH Apts. - Baltimore (former Brewers Hill Warehouse)

## MASSACHUSETTS

- 12-16 McLellan St. - Dorchester
- Blue Mountain Apartments - Dorchester
- Cotton Mill Apts. - Whitinsville (former Linwood Mill)
- Court Square - Springfield (former Court Square Hotel)
- Knitting Mill - Fall River (former Knitting Sweater Mill)
- The Chocolate Factory - Mansfield (former Lowney Chocolate)
- The Overlook - Weymouth (former shoe factory)

## MICHIGAN

- Dreamtroit - Detroit (former Warren Motor Car Co.)
- Emerald Flats - Grand Rapids (former Eastern Elem. School)
- Hilton Garden Inn - Flint (former Genessee Savings Bank)
- Park Avenue Bldg. - Detroit (former Gen'l Necessities Bldg.)
- Temple Hotel - Detroit (former Standard Accident Insurance Co.)
- The Press/321 - Detroit (former Detroit Free Press Bldg.)

## MINNESOTA

- Summit Terrace Flats - St. Paul (former 610-616 Summit Apts.)
- LorWest Apts. - St. Paul (former Cathedral Hill Apts.)

## MISSOURI

- 21C Hotel - St. Louis (former YMCA)
- 1500 St. Louis Ave. - Kansas City (former Ryley-Wilson Grocers)
- 2647 Locust - St. Louis (former Schwab Clothing Co.)
- Bailey School Lofts - Springfield (former Bailey School)
- Beaumont Bldg. - St. Louis (former Beaumont Telephone Exch.)
- Core Apts. - St. Louis (former Shriners Hospital)
- Indigo at the Arch - St. Louis (former LaSalle Bldg.)
- Last Hotel - St. Louis (former International Shoe Co.)
- Lofts at Hupp - St. Louis (former Weber Implement & Auto)
- Lyon School Apts. - St. Louis (former Lyon School)
- Missouri Botanical Gardens Linnean House - St. Louis
- St. Regis Apts. - Kansas City (former St. Regis Hotel)
- The Nash - St. Louis (former Nash Bldg.)
- Woodward Lofts - St. Louis (former Woodward Printing)

## NEW JERSEY

- Circle F Lofts - Trenton (former Circle F Mfg. Warehouse)

## NEW YORK

- 346 Austin St. - Buffalo (former Buffalo P.D. Precinct 13)
- Collar Factory Lofts - Troy (former Searle-Gardner Cuff and Collar Factory)
- Commonsplace Warren - Syracuse (former Chamber of Commerce Bldg.)
- Lofts at Franklin Square - Syracuse (former mfg. complex)

## NORTH CAROLINA

- Battery Park Apts. - Asheville (former Battery Park Hotel)
- Blue Bell @ Lenoir Mills - Lenoir (former Lenoir Cotton Mill)
- Johnston Mill Apts. - Charlotte (former Johnston Textile Mill)
- May Hosiery Lofts - Burlington (former WB Davis Hosiery Mill)
- Newry Mill Apts. - Seneca (former Newry Textile Mill)
- The Lofts on Haw River - Haw River (former granite mill)
- Residences at 57 South - Concord (former Cabarrus Savings Bank)
- Spinning Mill Apts. - Clayton (former Clayton Spinning Mill)
- Rocky Mount Mills - Rocky Mount

## NORTH DAKOTA

- Historic Apts. on 4th - Mandan (former Mandan Junior H.S.)







**GREYHOUND OFFICE BLDG.**  
 (FORMERLY GREYHOUND BUS DEPOT)  
 Birmingham, AL Built: 1941-1951  
 Windows: Project-Out, Fixed, Fixed Circle

Credit: Capstone Real Estate

## OHIO

- Edison 777 - Columbus (former Columbus Welding Shop)
- Feick Bldg. - Sandusky
- Fort Industry Square - Toledo
- Franklin County Memorial Hall - Columbus
- Graphic Arts Lofts - Dayton (former printing/publishing wrhse.)
- Huffman Place - Dayton (former Huffman Block Bldg.)
- Rhodes Mansion Apts. - Cleveland (former Cuyahoga County Services Bldg.)
- Spooky Nook - Hamilton (former Champion Paper Mill)
- Sycamore Place at St. Xavier Park - Cincinnati (former Krippendorf & Dittman Shoe Co.)
- The Lofts at WB - Toledo (former Wonder Bread Factory)

## OKLAHOMA

- Community Center - Ponca City
- The Harmony - Oklahoma City (former Harmony Public School)

## OREGON

- Medford Middle School - Medford (former Medford H.S.)

## PENNSYLVANIA

- 1100 N. Delaware - Philadelphia (former Edwards Corner)
- 200 Adams - Scranton (former Stoer & Fister Furniture)
- Herringbone Lofts - Philadelphia (former Howard Clothes Factory)
- Huntingdon Mills - Philadelphia (former Franklin Carpet Mill)
- Keystone Flats on 3rd - Pittsburgh (former office bldg.)
- Max Levy Bldg. Apts - Philadelphia (former Max Levy Autograph Co.)
- Poth Brewery Lofts - Philadelphia (former Poth Brewery)
- The Arsenal - Philadelphia (former Frankford Arsenal Munitions Plant)
- The Delbar - Perkase (former Dallenbarger Mfg. Co.)
- The Willows - East Greenville (former SOS Products Bldg.)

## SOUTH CAROLINA

- Imperial Bldg. - Lake City (former Imperial Tobacco Wrhse.)
- Zimmerli Performance Center - Spartanburg (former Twichell Auditorium)

## TENNESSEE

- Arrive Hotel - Memphis (former Memphis School of Art)
- Orion Federal C.U. - Memphis (former Wonder Bread Factory)
- Kemmons Wilson HQ - Memphis (former Spaghetti Wrhse.)
- Marine Residence - Memphis (former U.S. Marines hospital)
- The Brewery - Memphis (former Tennessee Brewery)
- The Sanctuary - Clarksville (former Civil War hospital)

## TEXAS

- Baxter Lofts - Harlingen (former Baxter Bldg.)
- Childress County Courthouse - Childress
- Mitchell County Courthouse - Colorado City

## UTAH

- A & Z Building - Salt Lake City (former A & Z Produce)
- Post District Barrell and Annex Bldgs. - Salt Lake City

## VIRGINIA

- American Tobacco Center - Richmond (former American Tobacco Co.)
- Virginia Military Academy Shipp Hall - Lexington
- Whitefield Commons - Arlington (former Windsor Apts.)

## WASHINGTON DC

- True Reformer Event Center (former True Reformer Bldg.)

## WEST VIRGINIA

- Kaley Center - Wheeling (former Riley Bldg.)
- Maxwell Centre - Wheeling (former YMCA)

## WISCONSIN

- Berkshire Sheboygan Falls Senior Apts. - Sheboygan (former Sheboygan Falls Middle School)
- Brass Works Apts. - Wheeling (former Borg Corp. Bldg.)
- Brooke Street Lofts - Fond du Lac (former Northern Casket Co.)
- Cabrini Lofts - Oshkosh (former St. Francis Cabrini School)
- Cream City Lofts - Milwaukee (former cigar factory)
- Crescent Lofts - Appleton (former Appleton Post-Crescent Newspaper)
- Eagle Knit Bldg. - Milwaukee (former Eagle Knit Mills)
- Exchange @ 104 - Fond du Lac (former Commercial Nat'l Bank)
- Heritage House Annex - Kenosha (former Heritage House Inn)
- Lawler School Lofts - Prairie du Chien (former Lawler School)
- Legacy Lofts - Milwaukee (former Blommer Ice Cream)
- McKinley Veterans Housing - Milwaukee (former McKinley Elementary School)
- Riverside Lofts - Jefferson (former Foremost Bldgs.)
- Spartan Lofts - Sparta (former Sparta High School)
- Streetcar Lofts - Milwaukee (former Underwriters Exchange)
- Tenor High School - Milwaukee (former Sentinel Bldg.)
- The Fortress - Milwaukee (former Mayer Boot & Shoe Factory)
- Thirty-Seventh Street School Apts. - Milwaukee (former 37th Street School)
- The Wheatly - Milwaukee (former Phillis Wheatly School)




# HISTORICAL SERIES

Find more information on Quaker windows and doors



 [www.QuakerCommercialWindows.com](http://www.QuakerCommercialWindows.com)

 1-800-347-0438

 [commercial@quakerwindows.com](mailto:commercial@quakerwindows.com)



Made in America: All Quaker products are designed and manufactured in the United States at our state-of-the-art facilities in Eldon, MO (above) and Freeburg, MO.



November, 2023 V3

Credit: McGinn Photography



On the cover:

## CROSTOWN CONCOURSE (FORMERLY SEARS CROSTOWN BUILDING) Memphis, TN Built: 1927

Windows: Fixed with Floating Project-Out

A mere 180 days after construction began, Sears Crosstown opened -- a remarkably efficient feat considering it was 14 stories tall and covered 1.5 million sq. feet. By the mid-1990s, Sears' operations there had ceased, leaving what was once the largest building in Memphis completely empty. Developers were told to knock this National Register member down but resisted and soon embarked on a massive renovation project which included 3,200+ windows. Seven custom dies were necessary. The result was tabbed as the largest historic adaptive re-use, LEED-Platinum project in the world. The Art-Deco gem is now a mixed-use, vertical urban village i.e. "a city within a city". More than 3,000 people live, work or make their way through the building daily.