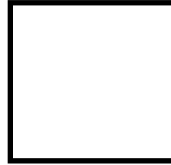




**QUAKER**  
COMMERCIAL WINDOWS AND DOORS



**K200 Series  
CW50**

**2 3/8" Frame Depth  
Picture Window (Fixed)**

## K200 SERIES PICTURE WINDOW (FIXED)

The Quaker Keystone K200 Series Horizontal Slider window is ideal for a variety of applications including - Hospitality, Institutions, Education, Apartments, Assisted Living and Housing Authority.

### FEATURES

- ◇ Commercial Framing System
  - 2 3/8" main frame
  - 0.062" wall thickness of frame
- ◇ Enhanced Design
  - Azon pour and debridge thermal break is 1/2" wide in all frame
  - Frame and sash mortised and joined with screw fasteners
- ◇ Glazing
  - 1" insulated glass

### BENEFITS

- ◇ The capacity to match exterior colors for unique project facades
- ◇ The ability to facilitate large sizes for taller and wider window openings

### OPTIONS

- ◇ Available Configurations
  - Fixed
  - Geometric shapes
- ◇ Muntin Choices
  - Internal or simulated divided lites available
- ◇ Nailing Fin
- ◇ Glazing
  - Multiple Low-E and argon glazing choices
  - Capillary tubes
  - Wide variety of glazing, tinting and thickness options
- ◇ Panning & Trim Choices
  - Wide variety of panning, receptor and trim available
- ◇ Mulling
  - Wide variety of structural mulls
- ◇ Specialty
  - Attached exterior or interior storm window
  - Extension jambs
  - Louver

### PERFORMANCE

- ◇ Structural & Thermal (test reports or thermal simulations available upon request)

Model	Picture Window (Fixed)
NAFS Rating	CW50
Structural Load P.S.F.	90.23
Air at 50 MPH (cfm/ft <sup>2</sup> )	≤0.10
Water (No Penetration) P.S.F.	7.52
U-Value (ranges based on multiple Low-E/Argon combinations)	0.27-0.32
SHGC (ranges based on multiple Low-E/Argon combinations)	0.16-0.37

Window test size: 64" × 71"



Our products are tested to the standards of and certified by some of the foremost organizations in the fenestration industry.



**QUAKER**  
COMMERCIAL WINDOWS AND DOORS

# ARCHITECTURAL PAINT COATINGS AND FINISHES

◇ Baked on powder coat finish meets AAMA 2604 (an FGIA specification) and is available in unlimited colors

- Quaker Impressive Palette of Colors



- 7 Resemble Colors (painted finish resembling anodized)



- Unlimited Custom Colors

◇ AAMA 2605 (an FGIA specification) powder coat finishes (not available for all colors shown)

◇ SolarLE Paint Finish (available with Textured Black and Dark Espresso colors only)

◇ AAMA 611-98 Class I (an FGIA specification) clear and tinted anodized finishes

\* Printed colors shown here may not accurately depict actual painted colors. Color samples are available upon request.

Our products are tested to the standards of and certified by some of the foremost organizations in the fenestration industry.



**QUAKER**  
COMMERCIAL WINDOWS AND DOORS



**QUAKER**  
COMMERCIAL WINDOWS AND DOORS

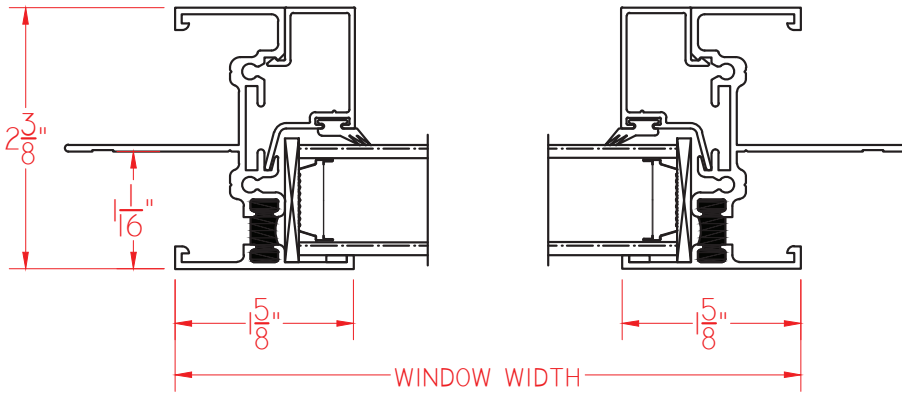


**Keystone**  
SERIES

**K200 Series  
CW50  
2 3/8" Frame Depth  
Picture Window (Fixed)**

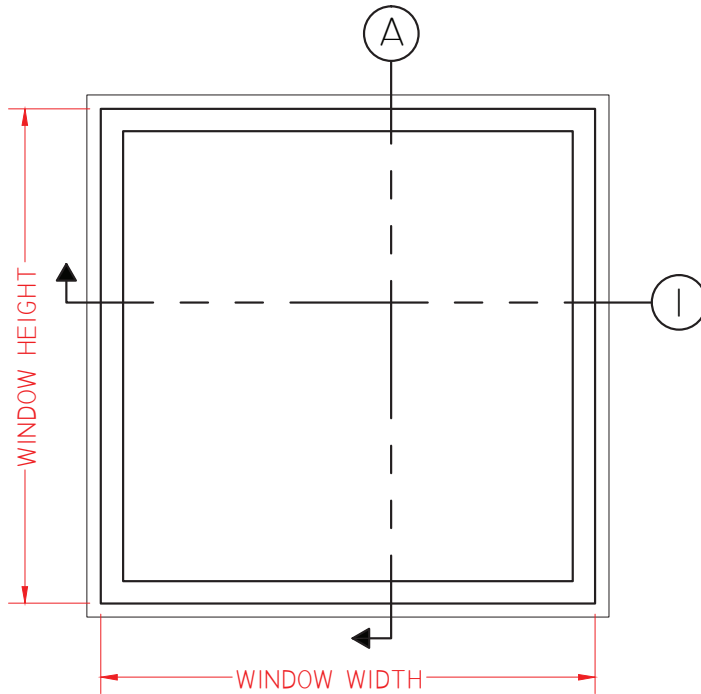
# K200 PICTURE WINDOW WITH NAILING FIN

This document contains confidential and proprietary information intended for the private use of Quaker.  
© 2016 Quaker Window Products Co., INC. All rights reserved.  
Quaker reserves the right to change any/all designs without notice. Due to periodic re-certification requirements, result shown may vary.

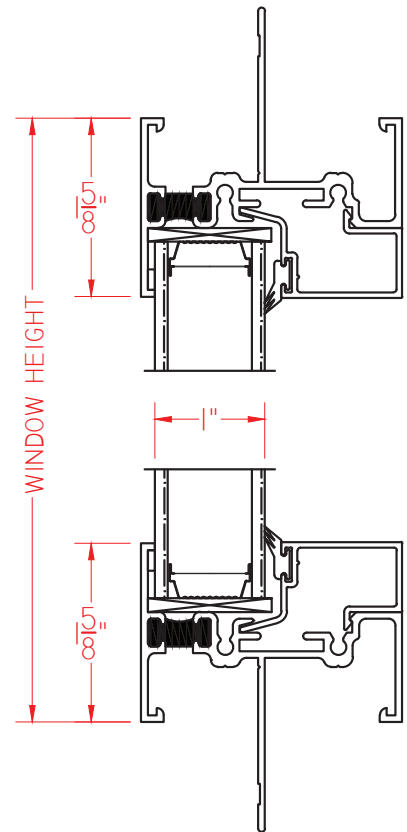


① HORIZONTAL  
CROSS SECTION

Ⓐ VERTICAL  
CROSS SECTION



ELEVATION SCALE 3/4" = 1'-0"



SCALE 1:2

Our products are tested to the standards of and certified by some of the foremost organizations in the fenestration industry.



**QUAKER**  
COMMERCIAL WINDOWS AND DOORS



**QUAKER**  
COMMERCIAL WINDOWS AND DOORS



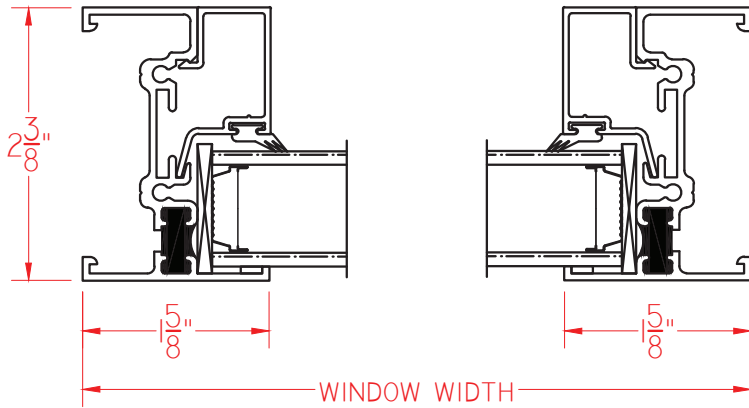
**Keystone**  
SERIES

**K200 Series  
CW50**

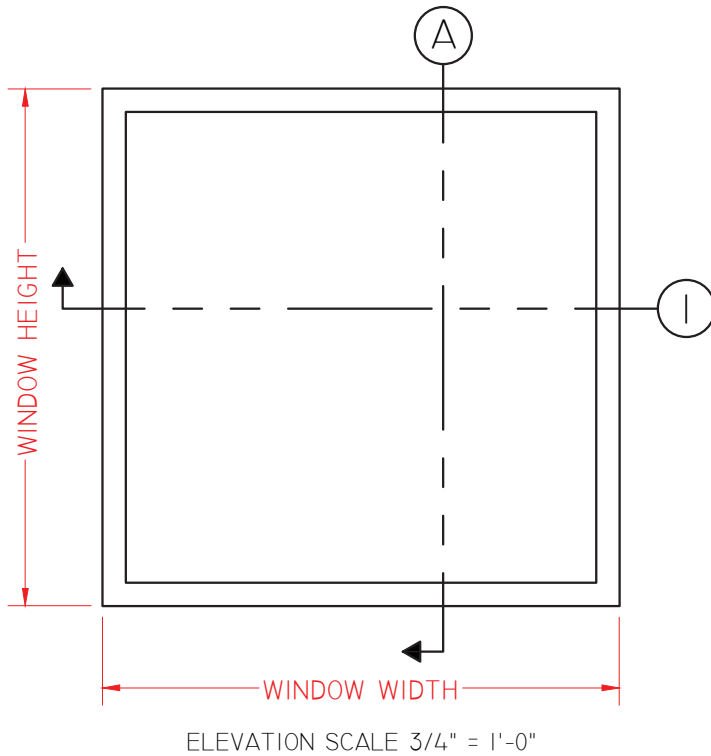
**2 3/8" Frame Depth  
Picture Window (Fixed)**

# K200 PICTURE WINDOW WITHOUT NAILING FIN

This document contains confidential and proprietary information intended for the private use of Quaker.  
© 2016 Quaker Window Products Co., INC. All rights reserved.  
Quaker reserves the right to change any/all designs without notice. Due to periodic re-certification requirements, result shown may vary.

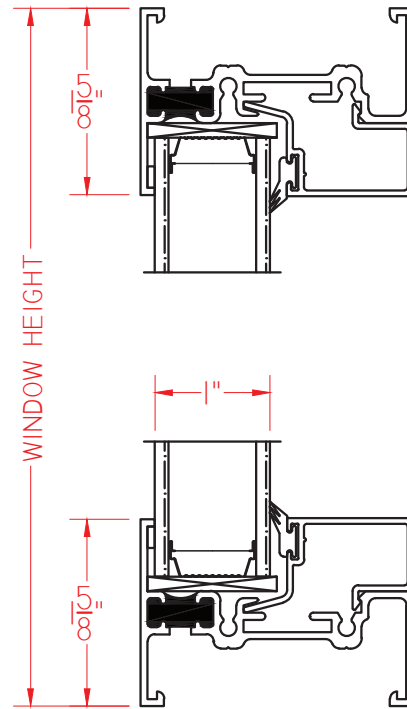


① HORIZONTAL  
CROSS SECTION



02.04.2015 VERSION 1.0

Ⓐ VERTICAL  
CROSS SECTION



SCALE 1:2

Our products are tested to the standards of and certified by some of the foremost organizations in the fenestration industry.



**QUAKER**  
COMMERCIAL WINDOWS AND DOORS