

## T600 SERIES CASEMENT

### FEATURES

- ◇ Commercial Framing System
  - 3 1/4" main frame
  - 0.094" wall thickness of interior and exterior walls, 0.078" wall thickness elsewhere
- ◇ Thermally Enhanced Design
  - Azon pour and debridge thermal break is 1/2" wide in all main frame and vent rail extrusions
  - Assembled with heavy duty Monticelli cast aluminum corner keys
  - Mitered and pressure sealed internally with injected silicone through corner key passages.
  - Wrap-around marine glazing
- ◇ Glazing
  - 1" insulating glass
- ◇ Hardware
  - Butt hinges, 4-Bar hinges and Euro hinges available on both project-out and project-in models
  - Heavy-commercial Truth Contour™ locking system (Crank-out model only)
  - Heavy-commercial Truth Contour™ multipoint lock with push handle (no crank hardware)
  - Low profile cam handle (Push-out and Pull-in models only)
  - Pole Operated handle (Push-out and Pull-in models only)
  - Custodial lock (Pull-in model only)
  - Custodial lock with removable handle (Push-out model only)
- ◇ Screen
  - Wicket screed (Push-out model only)
  - Extruded aluminum screen frame with BetterVue™ mesh (Crank-out model only)
- ◇ Meets ADA Requirements (ADA Handle Required, Crank-out model only)

### BENEFITS

- ◇ The capacity to match exterior colors for unique project facades
- ◇ The ability to facilitate large sizes for taller and wider window openings

### OPTIONS

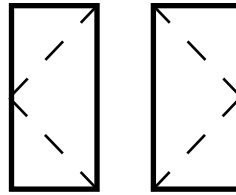
- ◇ Available Configurations
  - Project-out and Project-in casement
  - Push-out, Crank-out or Pull-in
  - Continuous frame capabilities
- ◇ Muntin Choices
  - Internal or simulated divided lites available
- ◇ Limited Travel Hardware
- ◇ Screen
  - Extruded aluminum screen frame with aluminum wire mesh
  - Extruded aluminum screen frame with sunscreen mesh
  - Extruded aluminum screen frame with stainless steel 0.009" thickness mesh
- ◇ Glazing
  - Multiple Low-E and argon glazing choices
  - Capillary tubes
  - Optional glazing stop to accept 1 3/8" (triple) glazing
  - Wide variety of glazing, tinting and thickness options
- ◇ Panning & Trim Choices
  - Wide variety of panning, receptor and trim available
- ◇ Mulling
  - Wide variety of structural mulls

### PERFORMANCE

- ◇ Structural & Thermal (test reports or thermal simulations available upon request)

Model	Casement (Project-Out)	Casement (Project-In)
Test Size	36" x 60"	
NAFS Rating	AW-PG70	
Structural Load P.S.F.	105.26	
Air at 50 MPH (cfm/ft <sup>2</sup> )	<0.10	
Water (No Penetration) P.S.F.	12.11	
U-Value (ranges based on multiple Low-E/Argon combinations)	0.41-0.45	0.41-0.46
SHGC (ranges based on multiple Low-E/Argon combinations)	0.12-0.41	0.12-0.41

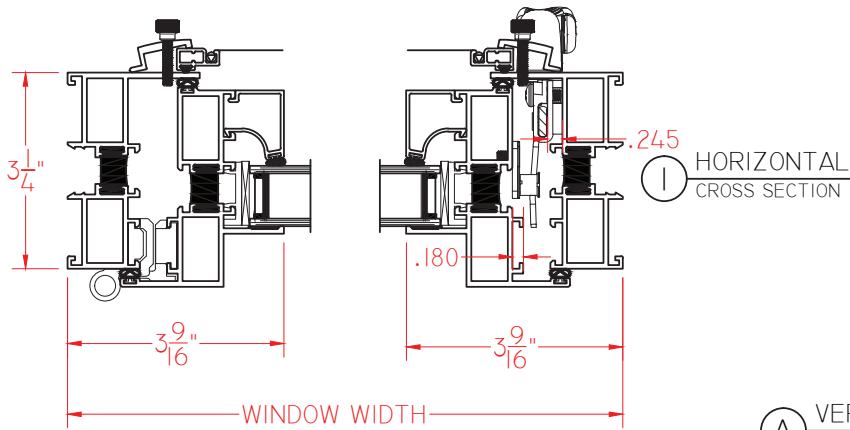
Operating Force: 9 lbf (project-out casement), 14 lbf (project-in casement), 3 lbf (ADA Handle maintain motion), 3 lbf (ADA Handle lock)



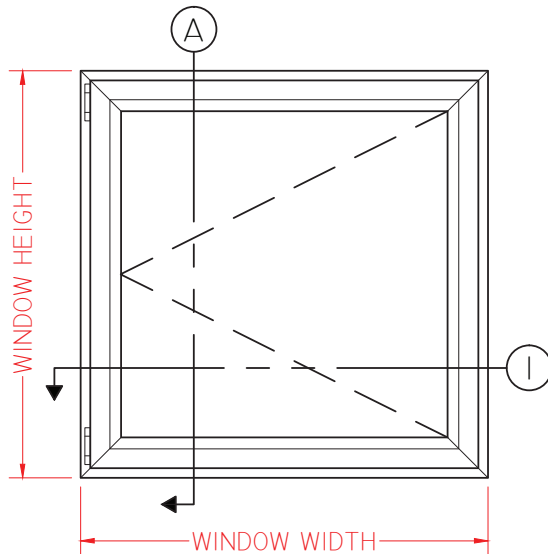
**T600 Series  
AW-PG70  
3 1/4" Frame Depth  
Casement**

**T600 OUTSWING CASEMENT CRANK OUT**

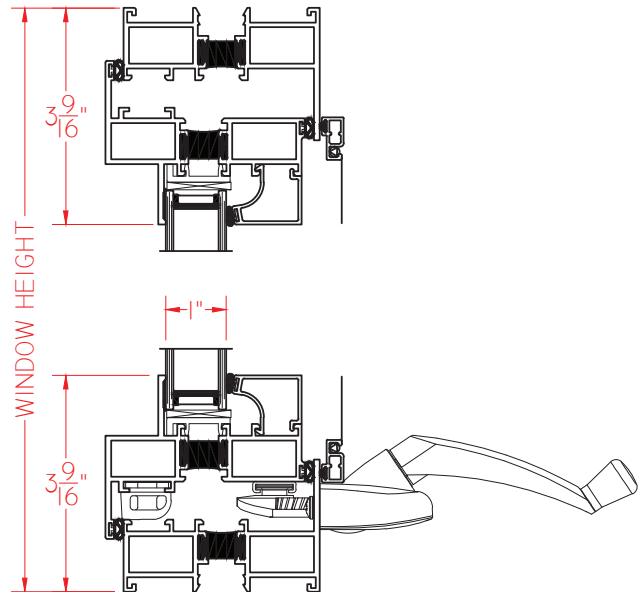
This document contains confidential and proprietary information intended for the private use of Quaker.  
© 2016 Quaker Window Products Co., INC. All rights reserved.  
Quaker reserves the right to change any/all designs without notice. Due to periodic re-certification requirements, result shown may vary.



**A VERTICAL CROSS SECTION**



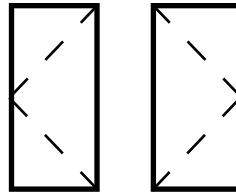
ELEVATION SCALE 3/4" = 1'-0"



SCALE 1:3

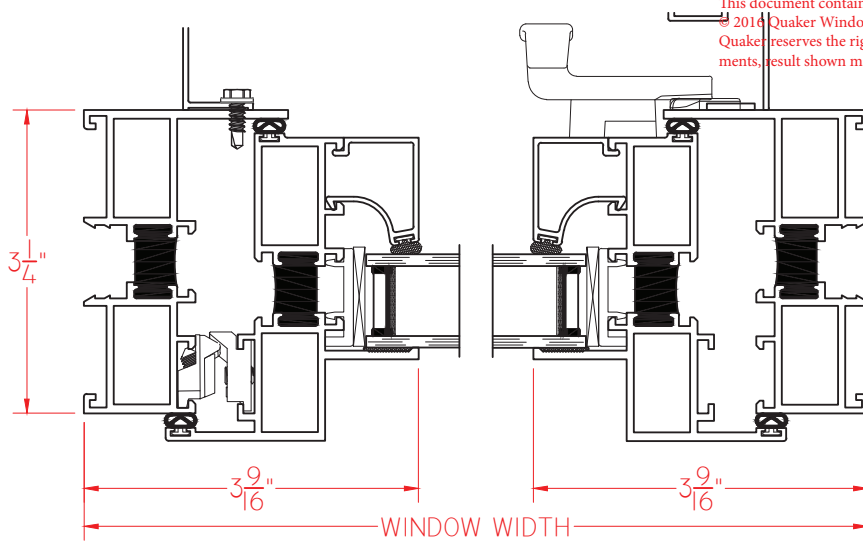
Our products are tested to the standards of and certified by some of the foremost organizations in the fenestration industry.



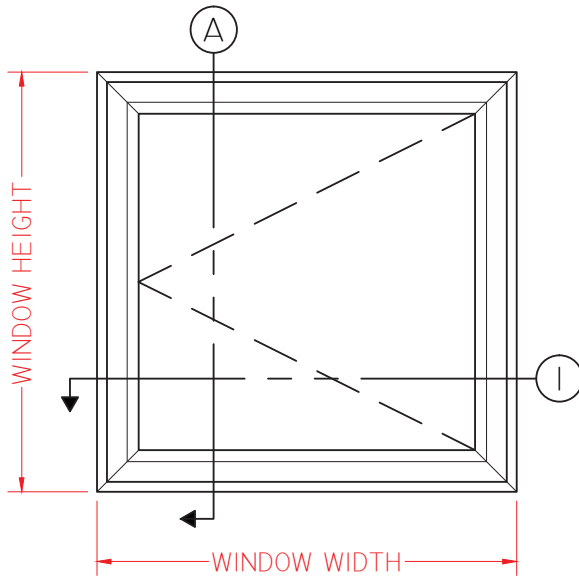


# T600 OUTSWING CASEMENT PUSH OUT

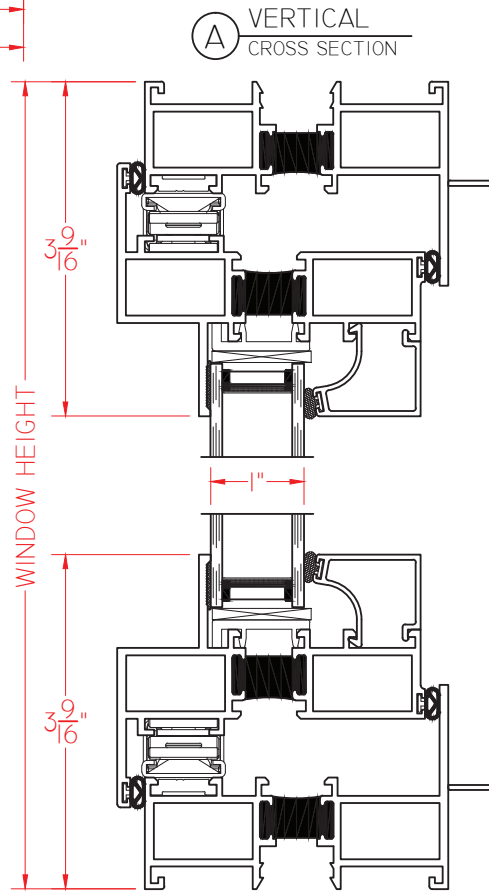
This document contains confidential and proprietary information intended for the private use of Quaker.  
© 2016 Quaker Window Products Co., INC. All rights reserved.  
Quaker reserves the right to change any/all designs without notice. Due to periodic re-certification requirements, result shown may vary.



① HORIZONTAL CROSS SECTION

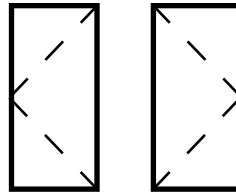


ELEVATION SCALE 3/4" = 1'-0"



Ⓐ VERTICAL CROSS SECTION

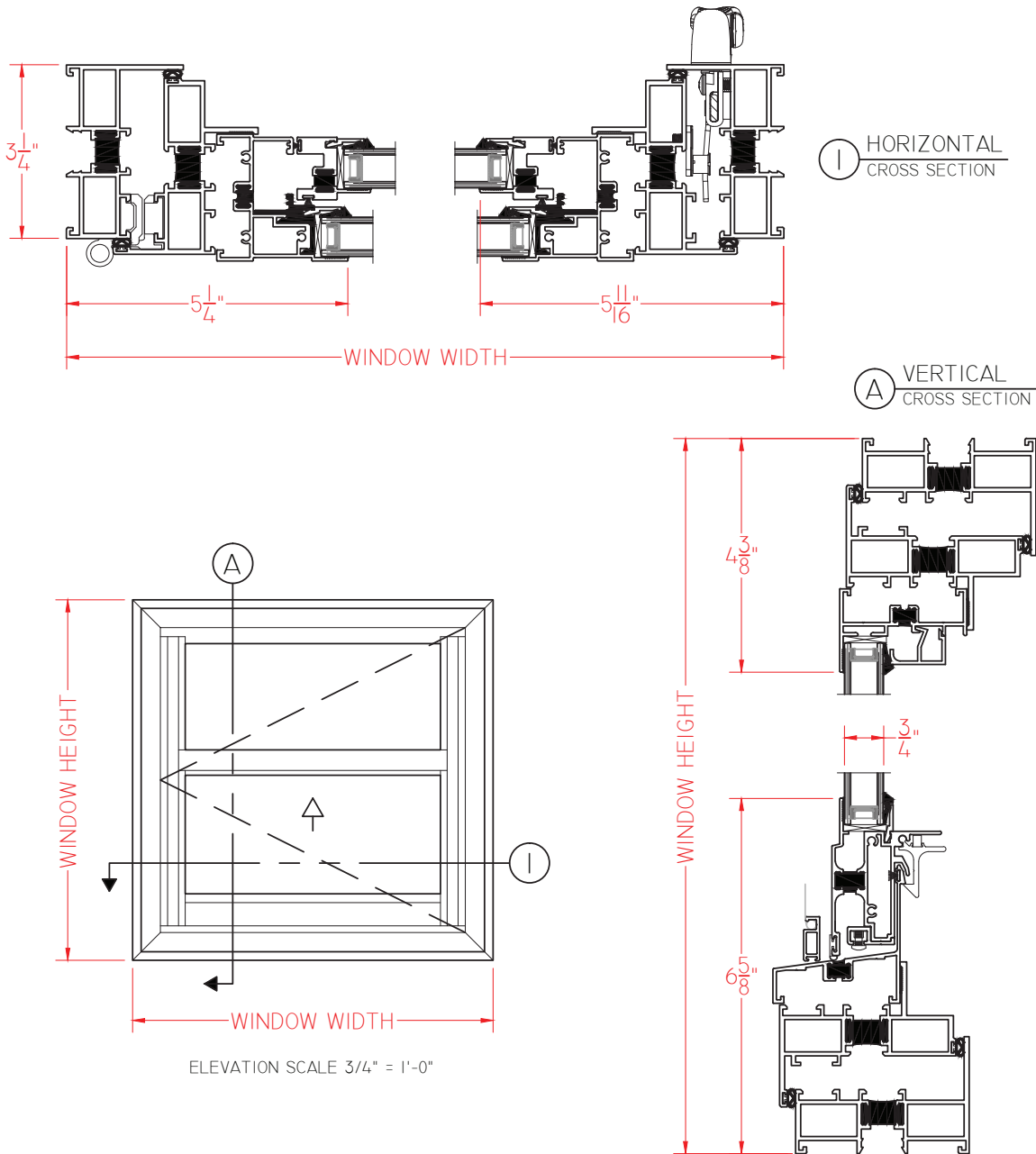
SCALE 1:2



# T600 Series 3 1/4" Frame Depth Casement

## T600 OUTSWING CASEMENT PUSH OUT EGRESS

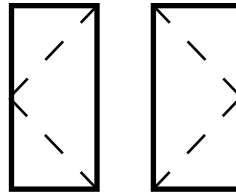
This document contains confidential and proprietary information intended for the private use of Quaker.  
 © 2016 Quaker Window Products Co., INC. All rights reserved.  
 Quaker reserves the right to change any/all designs without notice. Due to periodic re-certification requirements, result shown may vary.



SCALE 1:3

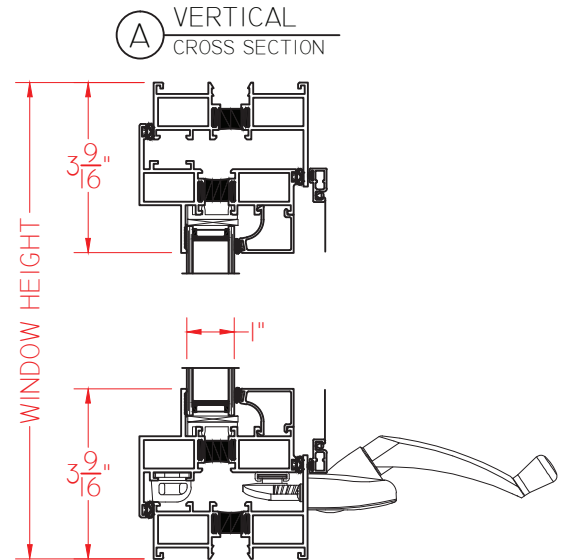
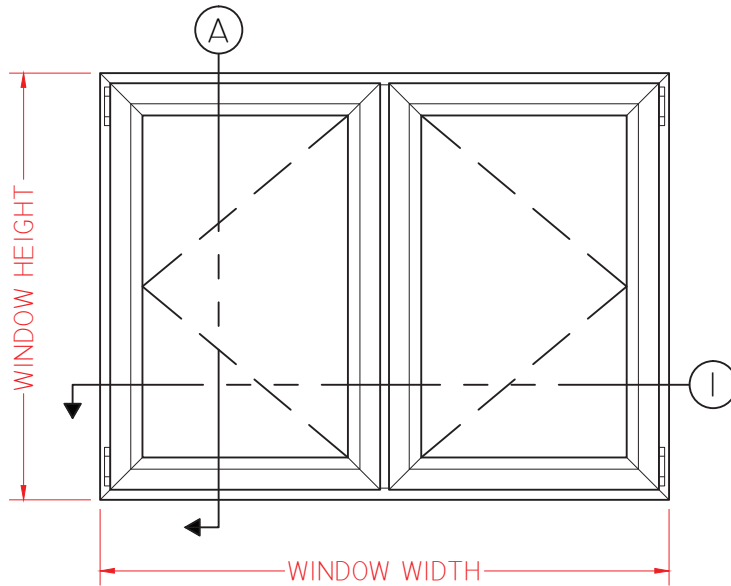
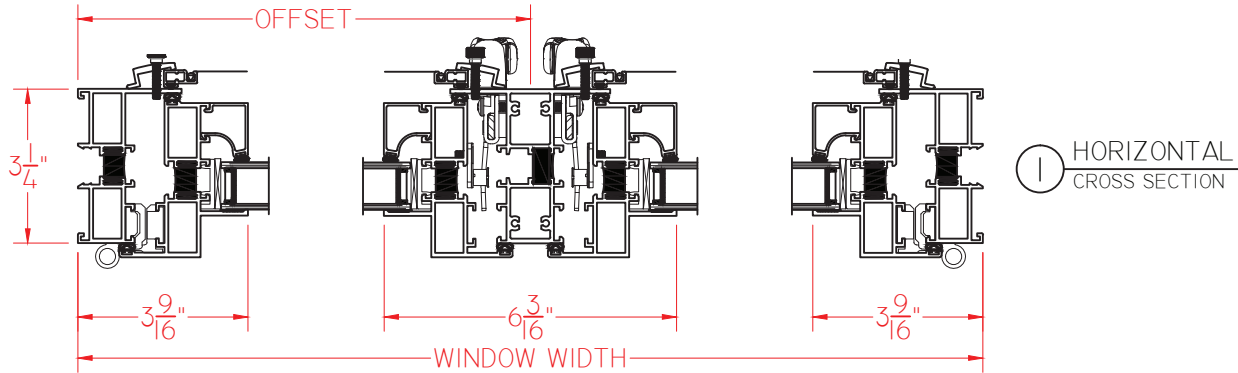
Our products are tested to the standards of and certified by some of the foremost organizations in the fenestration industry.



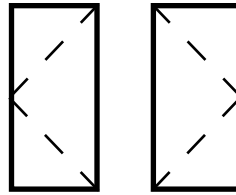


# T600 OUTSWING CASEMENT/CASEMENT

This document contains confidential and proprietary information intended for the private use of Quaker.  
© 2016 Quaker Window Products Co., INC. All rights reserved.  
Quaker reserves the right to change any/all designs without notice. Due to periodic re-certification requirements, result shown may vary.



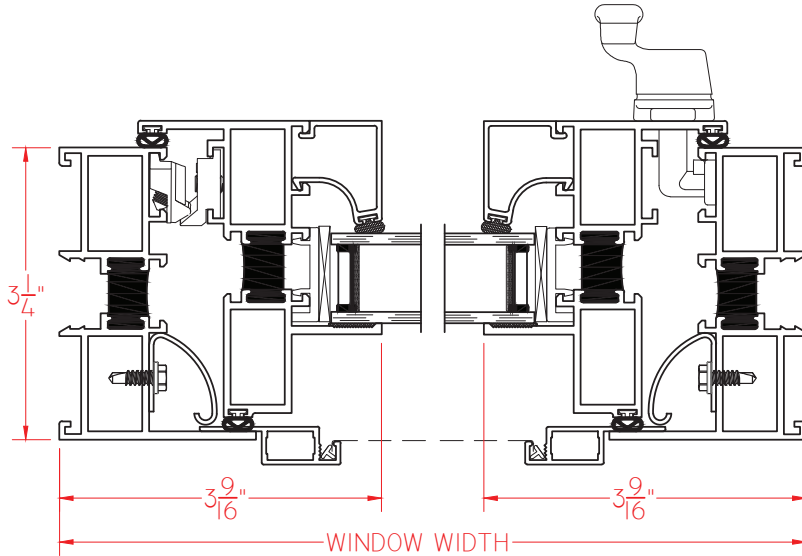
SCALE 1:4



# T600 Series 3 1/4" Frame Depth Casement

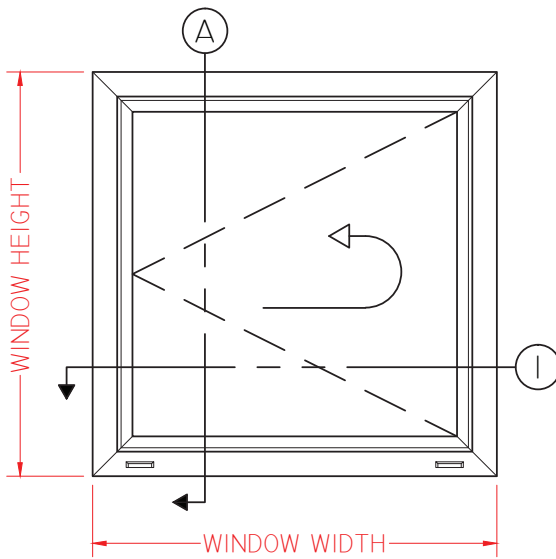
## T600 INSWING CASEMENT

This document contains confidential and proprietary information intended for the private use of Quaker.  
© 2016 Quaker Window Products Co., INC. All rights reserved.  
Quaker reserves the right to change any/all designs without notice. Due to periodic re-certification requirements, result shown may vary.

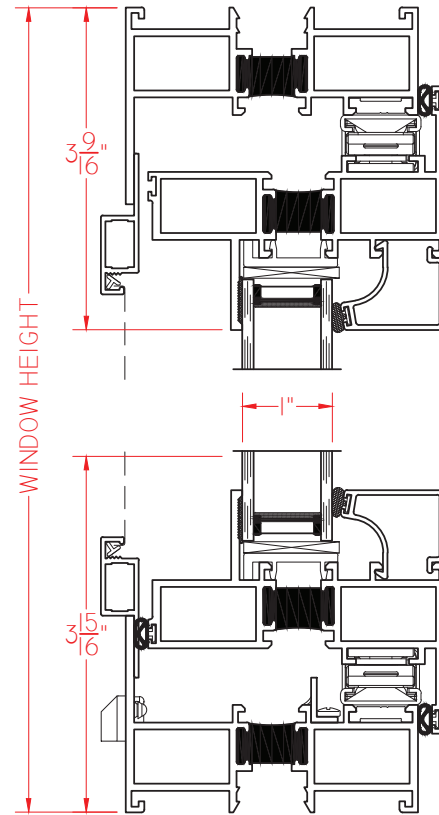


① HORIZONTAL  
CROSS SECTION

Ⓐ VERTICAL  
CROSS SECTION



ELEVATION SCALE 3/4" = 1'-0"



SCALE 1:2

Our products are tested to the standards of and certified by some of the foremost organizations in the fenestration industry.

