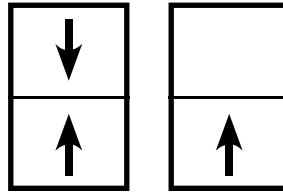




**QUAKER**  
COMMERCIAL WINDOWS AND DOORS



**E500 Series  
AW-PG40**

**3 1/4" Frame Depth  
Double Hung/Single Hung**

## E500 SERIES DOUBLE HUNG/SINGLE HUNG

The Quaker Emerge E500 Series Hung window is ideal for a variety of applications including - Energy Efficient, Institutions, Education, Apartments and Assisted Living.

### FEATURES

- ◇ Commercial Framing System
  - 3 1/4" main frame
  - 0.062" wall thickness of frame and sash
- ◇ Thermally Enhanced Design
  - Azon pour and debridge thermal break is 1/2" wide in all main frame and vent rail extrusions
  - Double fin-type weatherstripping
  - Stainless steel pivot bars
  - Header expander
  - Sill angle
  - Full width lift handles
- ◇ Glazing
  - 1" insulated glass
- ◇ Hardware
  - Block and tackle balancers
  - Gravity latch
- ◇ Screen
  - Extruded aluminum screen frame with BetterVue™ mesh

### BENEFITS

- ◇ The capacity to match exterior colors for unique project facades
- ◇ The ability to facilitate large sizes for taller and wider window openings

### PERFORMANCE

- ◇ Structural & Thermal (test reports or thermal simulations available upon request)

Model	Double Hung/Single Hung
AAMA/WDMA/CSA 101/I.S.2/A440-08 Rating	AW-PG40
Structural Load P.S.F.	60.15
Air at 50 MPH (cfm/ft <sup>2</sup> )	0.25
Water (No Penetration) P.S.F.	8.15
U-Value (with Low-E and Argon)	0.35 - 0.41
SHGC (with Low-E and Argon)	0.13 - 0.46

Window test size: 60" x 99"

Operating Force: 25 lbf (maintain motion), 11 lbf (latches)

### OPTIONS

- ◇ Available Configurations
  - Double hung
  - Single hung
  - Oriel single hung
- ◇ Muntin Choices
  - Internal or simulated divided lites available
- ◇ Hardware
  - Class 5 balancers
  - Dual self-aligning sweep locks
  - Limited travel latch
  - Wide variety of locking and operating hardware options
- ◇ Nailing Fin
- ◇ Screen
  - Extruded aluminum screen frame with aluminum wire mesh
  - Extruded aluminum screen frame with sunscreen mesh
  - Extruded aluminum screen frame with stainless steel 0.009" thickness mesh
  - Security screen
- ◇ Glazing
  - Capillary tubes
  - Argon gas
  - Wide variety of glazing, tinting and thickness options
- ◇ Panning & Trim Choices
  - Wide variety of panning, receptor and trim available
- ◇ Mulling
  - Wide variety of structural mulls
- ◇ Specialty
  - Attached exterior or interior storm window
  - Extension jambs



Our products are tested to the standards of and certified by the American Architectural Manufacturer's Association, the National Fenestration Rating Council and the Window & Door Manufacturers Association.

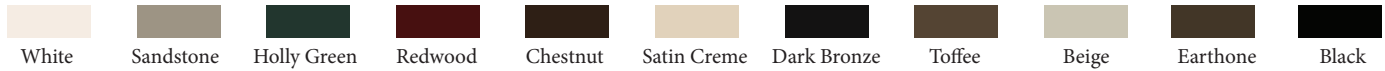


**QUAKER**  
COMMERCIAL WINDOWS AND DOORS

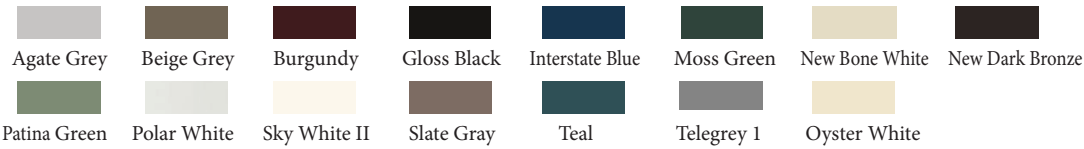
## ARCHITECTURAL PAINT COATINGS AND FINISHES

◇ Baked on powder coat finish meets ANSA/AAMA 2604 specs and is available in unlimited colors

- 11 Popular Colors



- 15 Impressive Colors



- 7 Resemble Colors (painted finish resembling anodized)



- Unlimited Custom Colors

◇ ANSA/AAMA 2605 powder coat finishes

◇ AAMA 611-98 Class I clear and tinted anodized finishes

\* Printed colors shown here may not accurately depict actual painted colors. Color samples are available upon request.

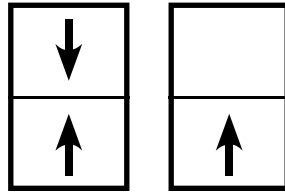
Our products are tested to the standards of and certified by the American Architectural Manufacturer's Association, the National Fenestration Rating Council and the Window & Door Manufacturers Association.



**QUAKER**  
COMMERCIAL WINDOWS AND DOORS



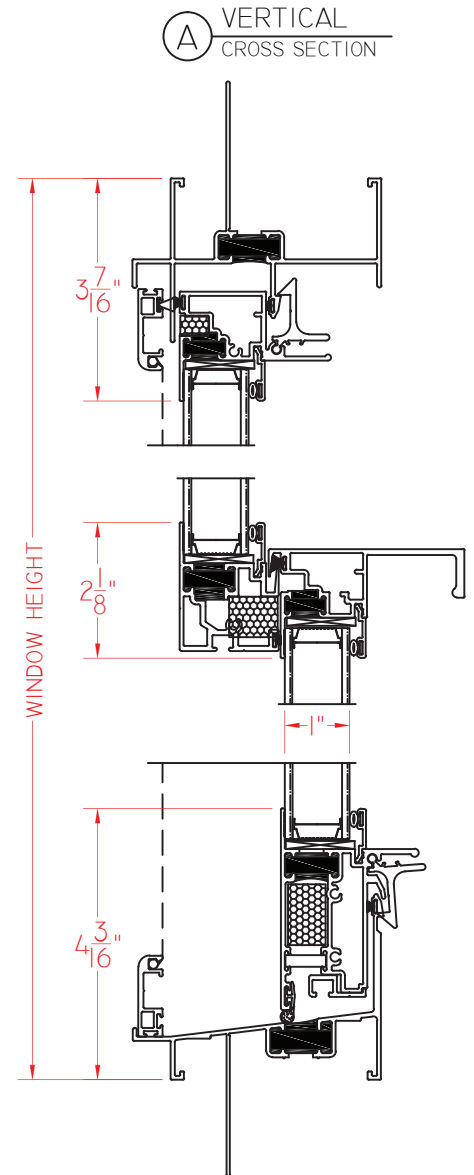
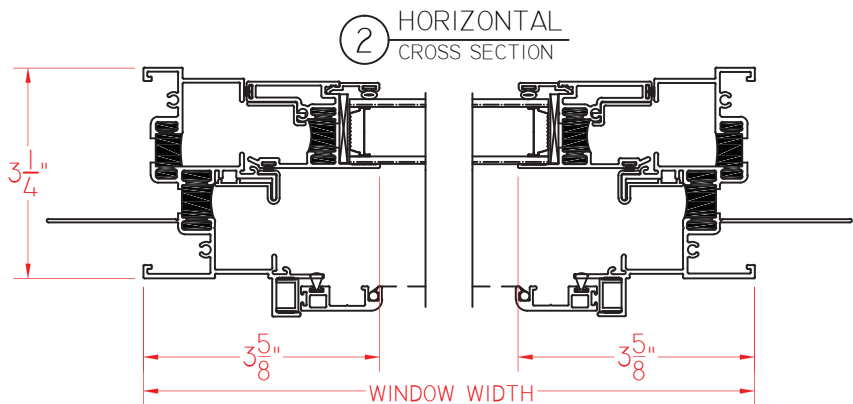
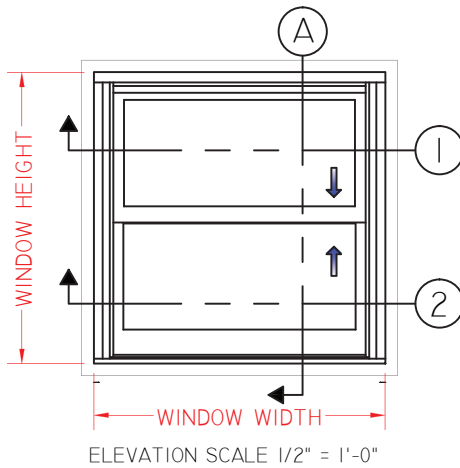
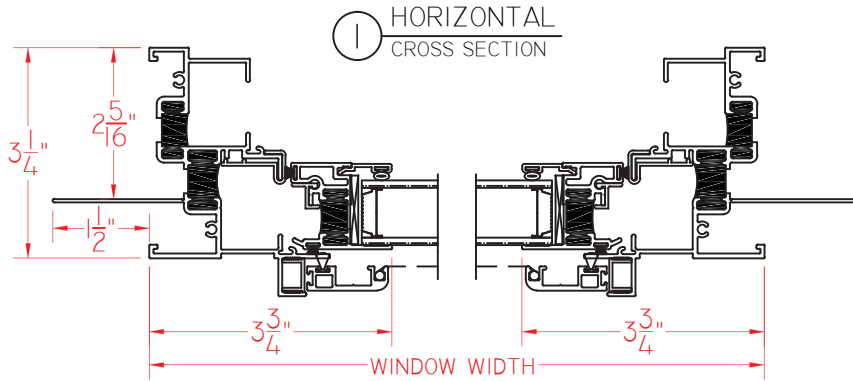
**QUAKER**  
COMMERCIAL WINDOWS AND DOORS



**E500 Series**  
**AW-PG40**  
**3 1/4" Frame Depth**  
**Double Hung/Single Hung**

# E500 DH/SH WITH NAILING FIN

This document contains confidential and proprietary information intended for the private use of Quaker.  
© 2016 Quaker Window Products Co., INC. All rights reserved.  
Quaker reserves the right to change any/all designs without notice. Due to periodic re-certification requirements, result shown may vary.



E500 DOUBLE HUNG WITH NAIL FIN 02.10.2015 VERSION 1.0

SCALE 1:3

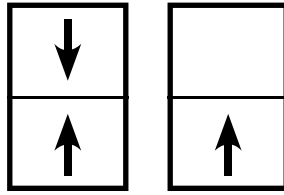
Our products are tested to the standards of and certified by the American Architectural Manufacturer's Association, the National Fenestration Rating Council and the Window & Door Manufacturers Association.



**QUAKER**  
COMMERCIAL WINDOWS AND DOORS



**QUAKER**  
COMMERCIAL WINDOWS AND DOORS

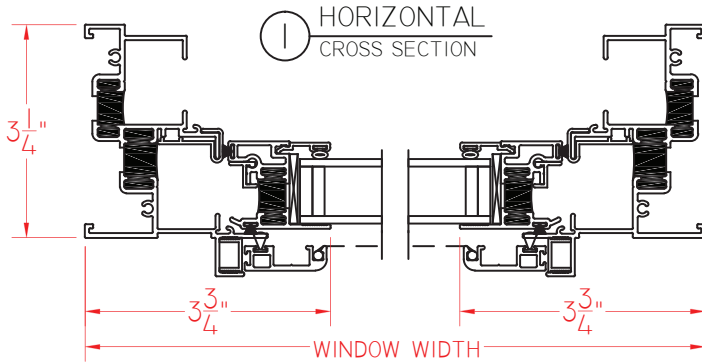


**E500 Series  
AW-PG40**

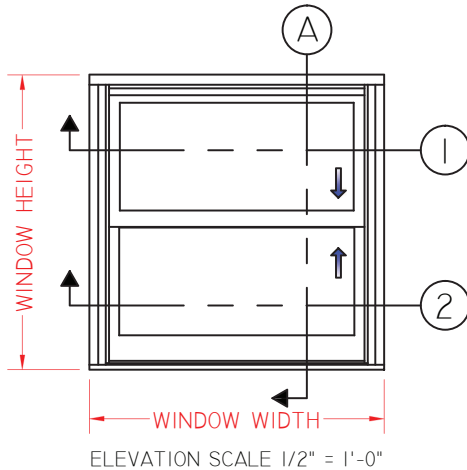
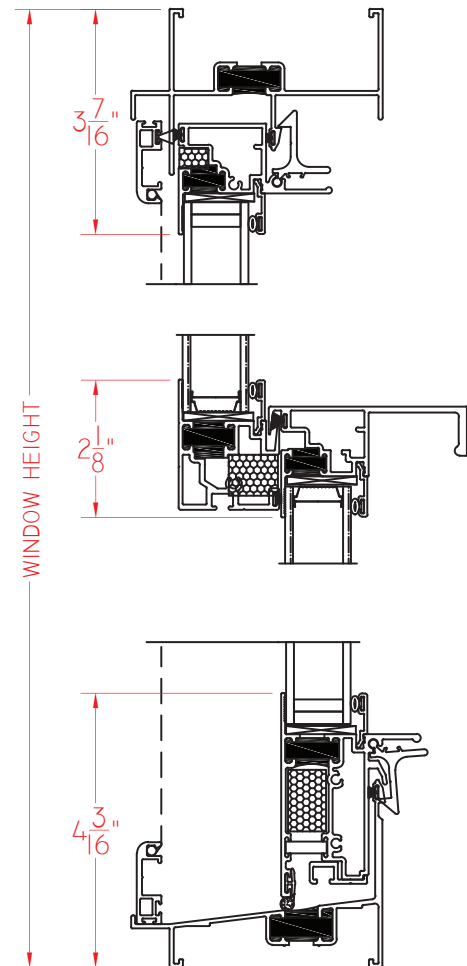
**3 1/4" Frame Depth  
Double Hung/Single Hung**

# E500 DH/SH WITHOUT NAILING FIN

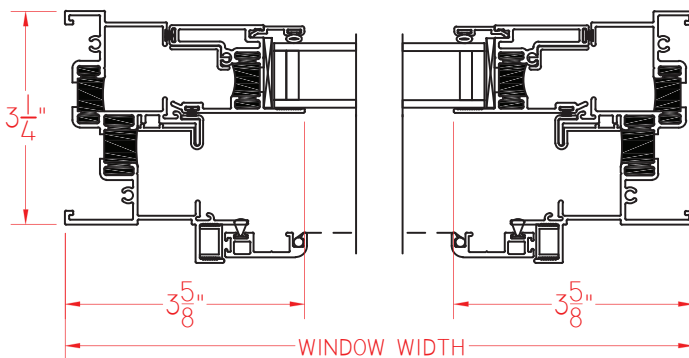
This document contains confidential and proprietary information intended for the private use of Quaker.  
© 2016 Quaker Window Products Co., INC. All rights reserved.  
Quaker reserves the right to change any/all designs without notice. Due to periodic re-certification requirements, result shown may vary.



Ⓐ VERTICAL CROSS SECTION



② HORIZONTAL CROSS SECTION



E500 DOUBLE HUNG 02.10.2015 VERSION 1.0

SCALE 1:3

Our products are tested to the standards of and certified by the American Architectural Manufacturer's Association, the National Fenestration Rating Council and the Window & Door Manufacturers Association.



**QUAKER**  
COMMERCIAL WINDOWS AND DOORS